



**TEREX®** | DEMAG

**DEMAG AC1000/9** | All Terrain Crane · 1000 t Lifting Capacity

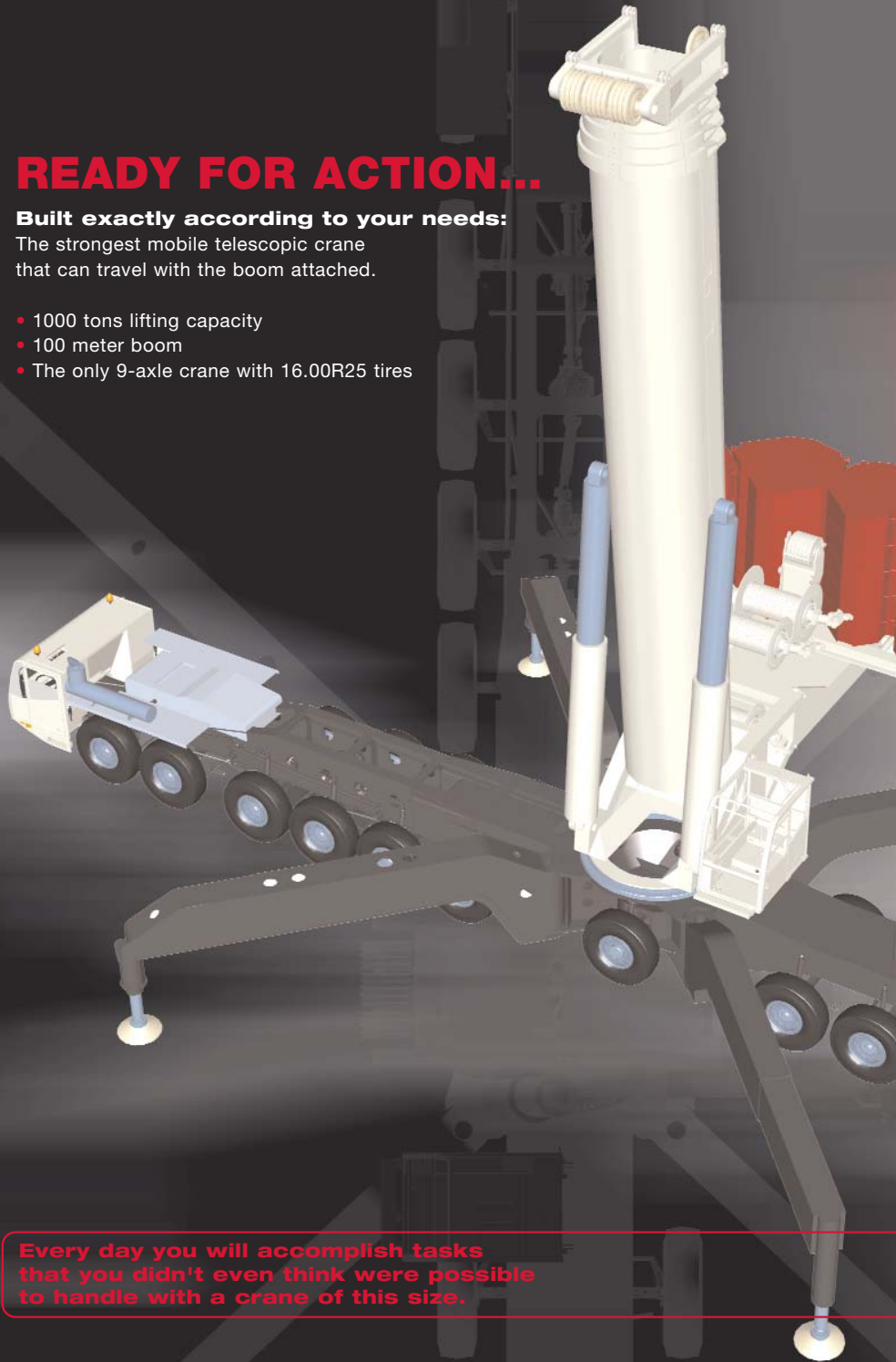
ALL TERRAIN CRANE

## READY FOR ACTION...

**Built exactly according to your needs:**

The strongest mobile telescopic crane that can travel with the boom attached.

- 1000 tons lifting capacity
- 100 meter boom
- The only 9-axle crane with 16.00R25 tires



Every day you will accomplish tasks that you didn't even think were possible to handle with a crane of this size.

# READY FOR ACTION

Terex® Demag AC1000/9 · 1,000 Tons Lifting Capacity

## Perfectly equipped

- **SSL**  
Sideways Superlift
- **MS**  
Runner ~ 6 m, offsettable
- **LF**  
Light Fixed Jib ~ 36 m, offsettable
- **SF**  
Strong Fixed Jib ~ 72 m
- **WIHI**  
Luffing Jib with offsettable head ~ 126 m (with SF- and LF-parts)
- **H2 + H3** · 2nd and 3rd hoist

## The carrier

Strong, flexible, confident. On every terrain.

- DaimlerChrysler aggregate with 480 kW / 653 PS
- ZF TC-Tronic automated gear box with integrated torque converter and retarder
- Drive train: 18 x 8 x 18
- Drive axles: 2, 3, 5 and 6
- Steering: all axles steered
- Active rear axle steering: Axles 6-9 speed-dependent steering, different steering programs can be selected
- Tires: 14.00R25, 17.50R25, 16.00R25, 20.50R25
- 2 (4) Outriggers:
 

max.	13.5 m x 13.5 m
mid.1	13.2 m x 9.6 m
(mid.2)	9.9 m x 9.6 m
(min.)	11.8 m x 7.1 m

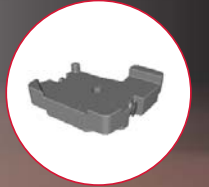
( ) = optional

## Make your choice

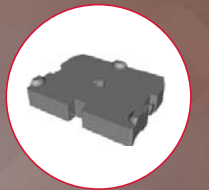
Counterweights



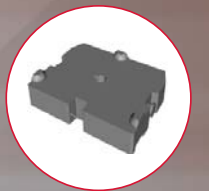
10t steel-box AC



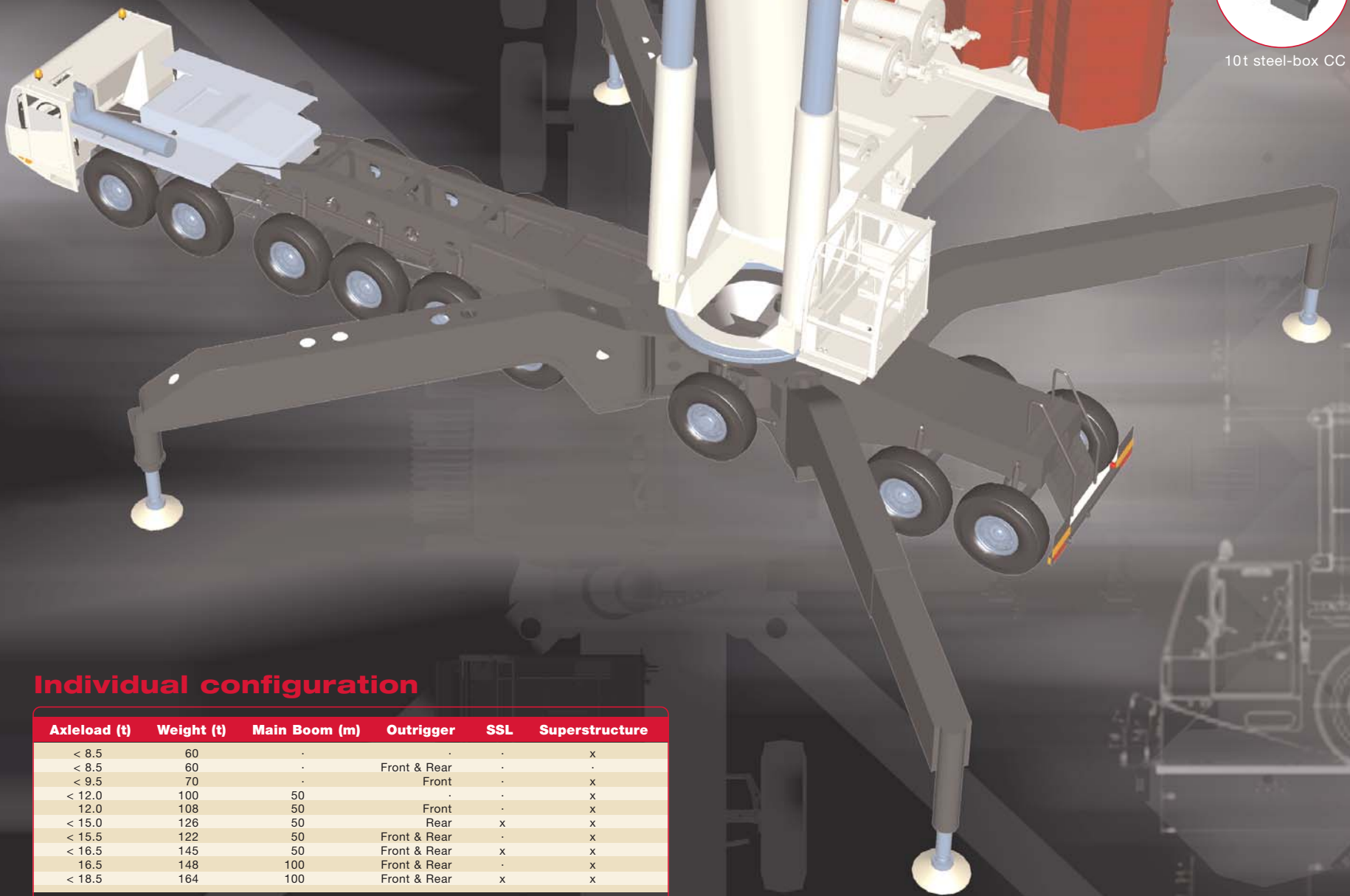
10t cast iron AC



10t cast-iron CC



10t steel-box CC



## Individual configuration

Axleload (t)	Weight (t)	Main Boom (m)	Outrigger	SSL	Superstructure
< 8.5	60	-	-	-	x
< 8.5	60	-	Front & Rear	-	-
< 9.5	70	-	Front	-	x
< 12.0	100	50	-	-	x
12.0	108	50	Front	-	x
< 15.0	126	50	Rear	x	x
< 15.5	122	50	Front & Rear	-	x
< 16.5	145	50	Front & Rear	x	x
16.5	148	100	Front & Rear	-	x
< 18.5	164	100	Front & Rear	x	x

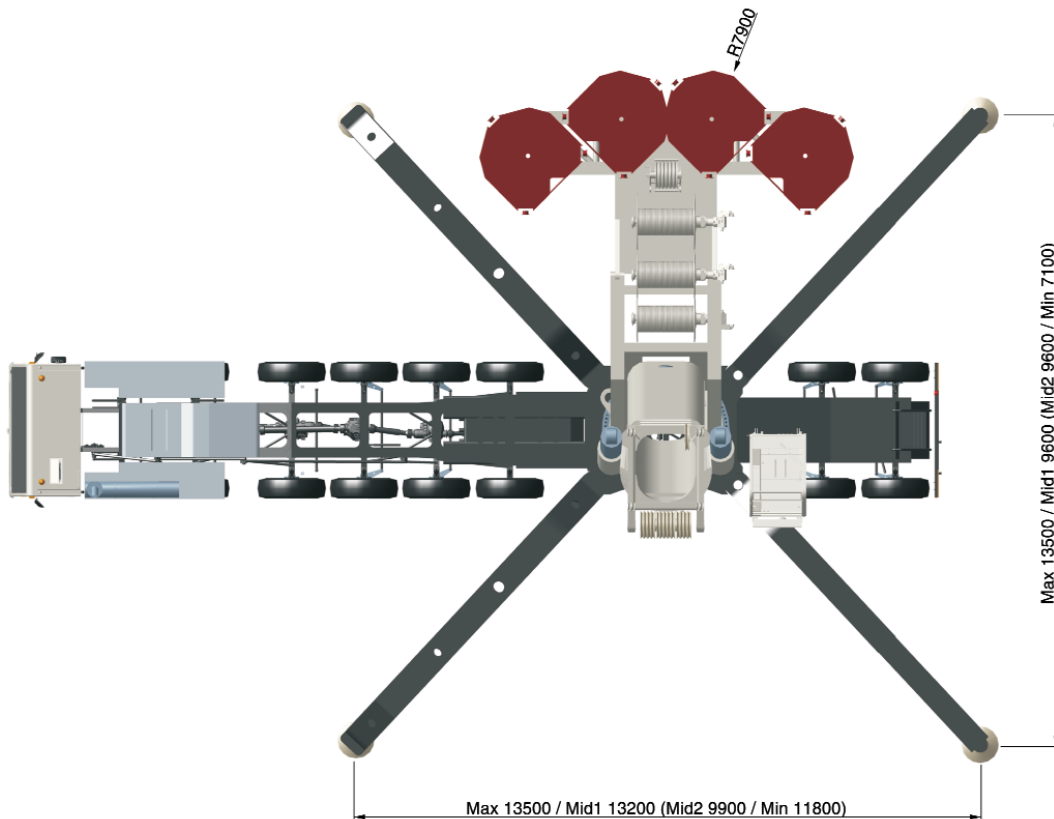
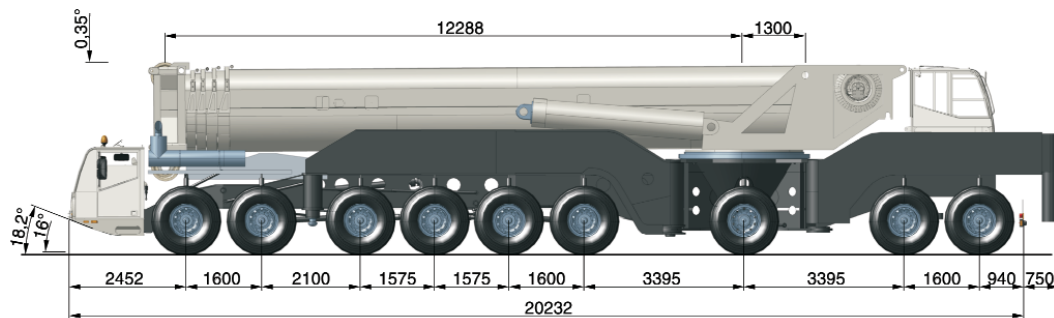
Ready for action...

Terex Demag GmbH & Co. KG  
Dinglerstraße 24  
D-66482 Zweibruecken  
Tel.: +49 (0) 63 32 / 830

info@terex-demag.com  
www.terex-demag.com



## Excellent proportions



[www.terex.com](http://www.terex.com)

April, 2007. Product specifications and prices are subject to change without notice or obligation. The photographs and/or drawings in this document are for illustrative purposes only. Refer to the appropriate Operator's Manual for instructions on the proper use of this equipment. Failure to follow the appropriate Operator's Manual when using our equipment or to otherwise act irresponsibly may result in serious injury or death. The only warranty applicable to our equipment is the standard written warranty applicable to the particular product and sale and Terex makes no other warranty, express or implied. Products and services listed may be trademarks, service marks or trade-names of Terex Corporation and/or its subsidiaries in the USA and other countries and all rights are reserved.

Copyright Terex Corporation 2007

Everything that counts...

Most powerful boom-on mobile crane, roadable within 12t axle load

Capacities 50m main boom without SSL

Radius	Main Boom · Outrigger 13.5 m x 13.5 m / Counterweight 220 t									
	13.6	17.7	21.8	25.9	30.0	34.1	38.2	42.3	46.4	50.0
3.0	1000.0*									
3.5	363.0	363.0	363.0							
4.0	363.0	363.0	363.0	363.0						
4.5	363.0	363.0	363.0	363.0						
5.0	363.0	363.0	363.0	363.0	361.0					
6.0	363.0	363.0	363.0	363.0	330.0	293.0				
7.0	358.0	357.0	353.0	347.0	307.0	266.0	244.0	216.0		
8.0	328.0	327.0	324.0	316.0	286.0	240.0	224.0	201.0	172.5	
9.0	303.0	302.0	298.0	284.0	265.0	215.0	204.0	187.5	163.5	146.0
10.0	281.0	280.0	274.0	254.0	245.0	201.0	184.0	173.5	154.5	138.5
12.0	221.0	241.0	229.0	220.0	208.0	173.5	162.5	149.5	136.0	124.0
14.0		195.0	197.0	187.0	183.0	149.5	141.5	133.5	122.5	110.5
16.0		149.0	165.5	166.0	157.5	133.5	125.0	117.5	111.0	101.0
18.0			138.0	144.5	142.0	117.5	113.5	105.5	99.8	91.8
20.0			110.5	125.0	127.0	106.0	102.0	96.6	91.2	82.4
22.0				106.0	112.0	96.5	92.9	87.7	84.1	76.0
24.0				87.6	99.2	86.8	85.6	80.1	77.1	70.4
26.0					86.1	78.2	78.3	74.9	70.4	64.8
28.0					73.1	70.6	71.1	69.6	66.3	59.3
30.0						63.1	65.2	64.4	62.1	56.0
32.0						55.6	59.4	59.4	58.0	52.7
34.0							53.7	54.9	53.8	49.4
36.0							47.9	50.4	50.2	46.1
38.0								45.9	46.8	43.1
40.0									43.4	40.8
42.0									40.0	38.6
44.0										36.3
46.0										34.0

... with SSL

Radius	Main Boom + Sideways Superlift · Outrigger 13.5 m x 13.5 m / Counterweight 220 t					
	30.0	34.1	38.2	42.3	46.4	50.0
3.0						
3.5						
4.0	334.0					
4.5	331.0					
5.0	328.0	306.0				
6.0	322.0	298.0	291.0	284.0		
7.0	315.0	289.0	283.0	275.0	266.0	200.0
8.0	305.0	281.0	275.0	267.0	257.0	237.0
9.0	293.0	270.0	266.0	258.0	247.0	229.0
10.0	273.0	257.0	255.0	250.0	238.0	221.0
12.0	235.0	228.0	226.0	224.0	219.0	206.0
14.0	205.0	200.0	198.5	196.5	195.0	188.5
16.0	177.5	175.5	176.5	174.5	173.0	170.5
18.0	155.0	153.0	154.5	155.5	153.5	152.5
20.0	137.0	135.0	136.5	137.5	138.5	136.5
22.0	122.5	120.5	122.0	123.0	124.0	124.0
24.0	110.5	108.0	110.0	110.5	111.5	112.0
26.0	100.0	98.3	99.9	100.5	101.5	101.5
28.0	80.4	89.7	91.2	91.9	93.0	93.1
30.0		82.2	83.7	84.4	85.5	85.6
32.0		65.5	77.2	77.9	78.9	79.1
34.0			71.0	72.2	73.2	73.3
36.0			57.2	67.0	68.1	68.2
38.0				61.7	62.8	62.9
40.0					58.0	58.1
42.0					53.9	53.9
44.0						50.2
46.0						46.8

What makes the AC 1000/9 so valuable for you:

**Performance**  
A performance increase of more than 50% over previous technologies opens undreamed-of possibilities:

- 1000 tons maximum lifting capacity
- 3000 mt maximum load moment
- Maximum hook height of more than 170 m

**Transport and Roadability**  
High art: the worldwide strongest mobile telescopic crane that can travel with boom attached.

- 50m main boom and front outriggers remains within 12 ton axle load
- 100m main boom, front and rear outriggers remains within 16.5 ton axle load
- Axle loads of less than 10 tons / 8.5 tons possible – as well as a total weight of less than 100 tons / 60 tons
- Thanks to the 16.00R25 tires, the maximum operating weight for traveling operations is an amazing 288 tons

**Dimensions**  
Variable outriggers and flexible counterweight system open new possibilities for operation. Space requirements are similar to the 500-ton class – lifting capacities are more than 100% higher in comparison

- Logistics**
- Maximum equipment weight: 22 tons
  - All equipment may be transported by standard trucks – no requirement for special vehicles
  - If required, an 80-ton crane (maximum) may function as an auxiliary crane for rigging

Only boom-on mobile crane with up to 100m main boom. roadable within 16.5t axle load

Capacities 100m main boom without SSL

Radius	Main Boom · Outriggers 13.5 m x 13.5 m / Counterweight 220 t																		
	17.1	21.2	25.3	29.4	33.5	37.6	41.7	45.8	49.9	54.0	58.1	62.2	66.3	70.4	74.5	78.6	82.7	100.0	
3.0	363.0	363.0																	
3.5	363.0	363.0																	
4.0	363.0	363.0	363.0																
4.5	363.0	363.0	363.0																
5.0	363.0	363.0	363.0	363.0															
6.0	363.0	363.0	363.0	345.0	343.0	272.0													
7.0	349.0	344.0	345.0	317.0	309.0	252.0	220.0	196.0											
8.0	319.0	317.0	311.0	291.0	276.0	233.0	205.0	184.0	163.5										
9.0	294.0	292.0	277.0	266.0	249.0	213.0	190.0	172.0	154.5	119.5									
10.0	272.0	270.0	250.0	241.0	230.0	197.5	175.0	160.0	145.5	113.5	99.4								
12.0	236.0	228.0	214.0	201.0	194.0	176.5	154.0	137.0	127.5	101.5	89.8	79.3	69.7						
14.0	202.0	194.5	182.0	174.5	166.5	155.5	138.0	124.5	113.0	89.4	80.3	72.1	63.8	57.6	52.0	47.7			
16.0		164.0	159.5	150.0	146.5	139.0	122.0	111.5	103.0	80.5	70.7	64.9	57.9	52.7	48.0	44.3	40.8		
18.0		137.0	136.5	134.0	127.0	124.5	111.5	99.4	93.4	73.8	65.2	58.6	52.1	47.8	43.9	40.8	37.9		
20.0			119.0	118.0	115.0	110.0	102.5	92.3	84.0	67.0	59.8	54.2	48.0	43.1	39.8	37.4	35.0	22.6	
22.0			101.5	103.5	103.0	100.5	93.7	85.2	78.4	60.3	54.4	49.9	44.7	40.3	36.5	34.0	32.1	21.3	
24.0				91.3	91.6	91.6	86.5	78.1	72.7	56.3	49.1	45.5	41.3	37.6	34.2	31.6	29.2	20.1	
26.0				78.9	82.0	82.6	80.2	72.5	67.1	52.4	46.0	41.3	38.0	34.8	31.8	29.6	27.5	18.9	
28.0					72.8	74.1	74.0	68.4	62.3	48.4	42.8	38.8	34.9	32.0	29.5	27.7	25.8	17.7	
30.0					63.7	67.1	67.7	64.2	59.0	44.5	39.7	36.2	32.8	29.5	27.2	25.7	24.2	16.5	
32.0						60.1	62.0	60.1	55.7	41.5	36.6	33.6	30.7	27.9	25.2	23.7	22.5	15.5	
34.0						53.0	56.5	55.9	52.4	38.6	34.2	31.0	28.6	26.3	23.8	22.0	20.8	14.7	
36.0							51.0	51.8	49.1	35.7	32.3	28.8	26.5	24.6	22.5	20.9	19.4	13.8	
38.0							45.4	47.7	46.1	32.9	30.3	27.3	24.5	23.0	21.1	19.7	18.4	12.9	
40.0								43.6	43.3	30.0	28.4	25.8	23.2	21.4	19.7	18.6	17.4	12.1	
42.0								39.5	40.5	27.8	26.5	24.2	22.0	20.2	18.4	17.4	16.4	11.2	
44.0									37.7	25.9	24.6	22.7	20.7	19.2	17.3	16.2	15.4	10.4	
46.0									34.9	23.9	23.1	21.2	19.4	18.1	16.5	15.2	14.4	9.8	
48.0										22.0	21.6	19.8	18.2	17.1	15.7	14.5	13.4	9.2	
50.0										20.1	20.0	18.8	16.9	16.0	14.8	13.9	12.8	8.7	
54.0											17.0	16.7	15.3	14.0	13.2	12.5	11.7	7.6	
58.0												14.6	13.9	12.9	11.7	11.1	10.5	6.5	
62.0													12.5	11.8	10.8	10.0	9.3	5.6	
66.0														10.7	9.9	9.3	8.5	5.0	
70.0															9.0	8.6	8.0	4.3	
74.0																7.8	7.4	3.7	
78.0																	6.8	3.0	
82.0																		2.7	
86.0																			2.5
90.0																			2.3
94.0																			2.1

... with SSL

Radius	Main Boom + Sideways Superlift · Outriggers 13.5 m x 13.5 m / Counterweight 220 t													
	33.5	37.6	41.7	45.8	49.9	54.0	58.1	62.2	66.3	70.4	74.5	78.6	82.7	100.0
3.0														
3.5														
4.0														
4.5														
5.0	316.0													
6.0	309.0	298.0	288.0											
7.0	303.0	291.0	280.0	273.0	192.5									
8.0	296.0	284.0	273.0	262.0	227.0	188.0	126.0							
9.0	280.0	277.0	265.0	252.0	215.0	197.0	182.0							