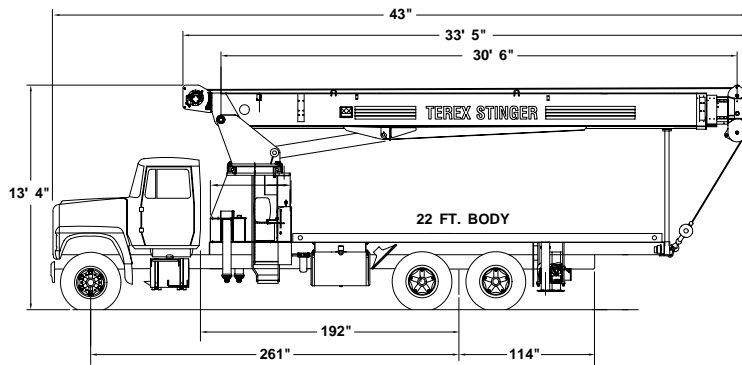




# STINGER™ 7077

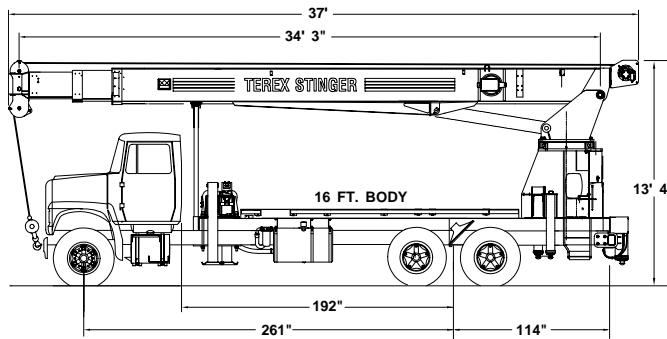
## Boom Truck Crane (Preliminary)

### MOUNTING CONFIGURATIONS



#### 7077 Truck-Crane Mounting Configuration (Standard)

Gross Vehicle Weight Rating.....	52,000 lbs. (23 587 kg)
Front Axle Weight Rating.....	18,000 lbs. (8165 kg)
Rear Axle Weight Rating.....	34,000 lbs. (15 422 kg)
Wheelbase.....	261 in. (6629 mm)
Cab to Axle.....	192 in. (4877 mm)
Afterframe.....	114 in. (2896 mm)
Transmission.....	Heavy-Duty (Neutral lock-up required for automatic transmission)
Electrical System.....	Heavy-Duty
Cooling System.....	Heavy-Duty
Frame Section Modulus.....	26.0 in <sup>3</sup> (426 cm <sup>3</sup> )
RBM Per Frame Rail.....	2,860,000 in. lb. (32 950 m. kg)



#### 7077 Rear Mount (RM) Mounting Configuration

Gross Vehicle Weight Rating.....	60,500 lbs. (27 443 kg)
Front Axle Weight Rating.....	18,000 lbs. (8165 kg)
Rear Axle Weight Rating.....	42,500 lbs. (19 278 kg)
Wheelbase.....	261 in. (6629 mm)
Cab to Axle.....	192 in. (4877 mm)
Afterframe.....	114 in. (2896 mm)
Transmission.....	Heavy-Duty (Neutral lock-up required for automatic transmission)
Electrical System.....	Heavy-Duty
Cooling System.....	Heavy-Duty
Frame Section Modulus.....	40 in <sup>3</sup> (655 cm <sup>3</sup> )
RBM Per Frame Rail.....	4,440,000 in. lb. (50 694 m. kg)

### FEATURES

- 70,000 lbs. (31 752 kg) maximum lifting capacity
- 87 ft. (26.5 m) maximum sheave height
- 140 ft. (42.6 m) maximum sheave height with 55 ft. (16.8 m) jib
- 77 ft. (23.5 m) fully proportional three-section telescopic “keel” boom
- Exclusive color coded boom and load charts
- Choice of two configurations – behind cab (with either 180° or 360° work area), or rear mount
- Easy-to-install optional 55 ft. (16.8 m) jib, man baskets or work platform increase job capabilities
- Electronic Load Moment Indicator and anti-two-block device standard
- 2-speed planetary winch has 15,000 lb. (6804 kg) maximum line pull, 101 fpm (31 mpm) line speed
- Externally located planetary rotation drive for easy accessibility for maintenance
- Dual operator stations with direct mechanically controlled hydraulic system
- 90 gal. (340 l) hydraulic tank
- Terex Support Plus product service

**simple, available and  
cost effective™**

Machines shown may have optional equipment.

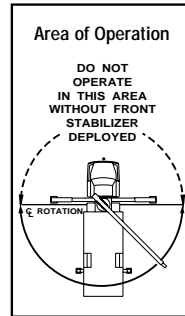
## STINGER 7077 LOAD RATINGS

**CAUTION:** Do not use this specification sheet as a load rating chart. The format of data is not consistent with the machine chart and may be subject to change.

### Load Ratings (Pounds) for 360° Full Capacity Work Area with Outriggers Extended and Optional Front Stabilizer

OPERATING RADIUS (FT)	BOOM LENGTH											
	30.5 FT		42 FT		54 FT		65 FT		77 FT		OPERATING RADIUS (FT)	
	LOADED BOOM ANGLE (DEG)	LOAD RATING (LB)	LOADED BOOM ANGLE (DEG)	LOAD RATING (LB)	LOADED BOOM ANGLE (DEG)	LOAD RATING (LB)	LOADED BOOM ANGLE (DEG)	LOAD RATING (LB)	LOADED BOOM ANGLE (DEG)	LOAD RATING (LB)		
5	79	70,000										5
8	73	49,400	78	41,800							8	
10	69	41,500	75	40,600							10	
12	64	35,700	72	34,800	77	34,000					12	
15	58	29,600	68	28,700	73	27,800	76	22,500			15	
20	45	22,600	60	22,000	68	21,100	72	20,500	75	18,800	20	
25	29	17,000	51	16,700	62	16,500	67	16,400	71	16,000	25	
30			42	12,700	55	12,500	62	12,400	67	12,000	30	
35			30	9,600	48	9,500	57	9,400	63	9,300	35	
40					41	7,400	51	7,300	58	7,200	40	
45					31	6,000	45	5,900	54	5,800	45	
50					17	4,700	38	4,600	49	4,500	50	
55								30	3,800	43	3,700	55
60								19	3,200	37	3,100	60
65									30	2,500	65	
70									21	2,000	70	
74									8	1,700	74	

NOTE: RATINGS ABOVE THE HEAVY LINE ARE BASED ON STRUCTURAL COMPETENCE AND NOT ON MACHINE STABILITY.



**Typical Deductions from Rated Loads for Handling Devices**

OVERHAUL BALL:	200 lbs.
1 SHEAVE LOAD BLOCK:	225-550 lbs.
2 SHEAVE LOAD BLOCK:	300-650 lbs.

**Stowed Jib Deductions (Pounds)**

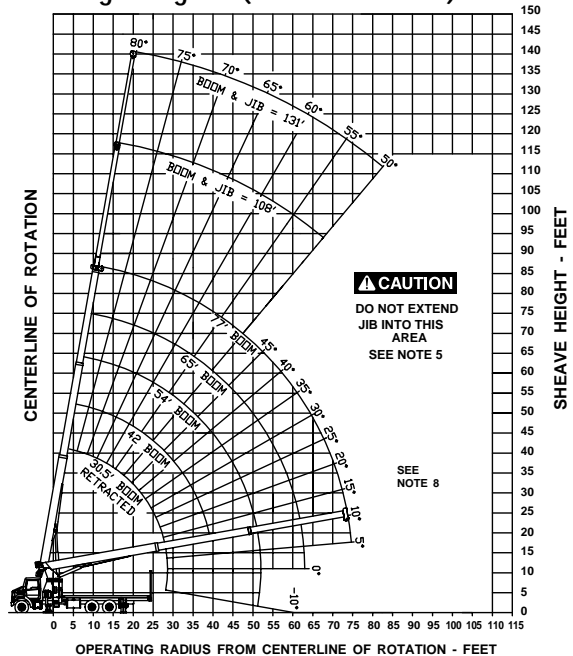
	900	700	500	400	335	
--	-----	-----	-----	-----	-----	--

**JIB CAPACITIES FOR ALL BOOM LENGTHS**

VERIFY OPERATIONAL MODE SETTING ON MG585 DISPLAY BEFORE LIFTING WITH JIB

Loaded Boom Angle	50°	55°	60°	65°	70°	75°	78°	80°
Retracted 30.5 ft. Jib	800	1400	2300	3300	4000	5300	6000	6450
Extended 55 ft. Jib	700	1050	1700	2300	3000	3500	3500	3500

### Range Diagram (30.5' - 77' boom)



### General Notes

- The operator must read and understand the Owner's Manual before operating this crane.
- Positioning or operation of crane beyond areas shown on this chart is not intended or approved except where specified in Owner's Manual.
- Loaded boom angles at specified boom lengths give only an approximation of the operating radius. The boom angle before loading should be greater to account for deflections. Do not exceed the operating radius for rated loads.
- Use rating of next longer boom for boom lengths not shown. Use rating of next greater radius for load radii not shown.
- Boom must be fully retracted when jib is erected before lowering below minimum angle. Retracted jib has no lifting capacity below a 50° boom angle.
- Use rating of next lower boom angle for boom angles not shown on jib load rating chart.
- Lifting off the main boom point while the swing around jib is erected is not intended or approved.
- Do not lower boom into this area, as hydraulic pressure will not allow raising the boom without retracting boom first.
- Crane load ratings on outriggers are based on freely suspended loads with the machine leveled and standing on a firm uniform supporting surface. No attempt shall be made to move a load horizontally on the ground in any direction.
- Practical working loads depend on supporting surface, wind and other factors affecting stability such as hazardous surroundings, experience of personnel, and proper handling, must all be taken into account by the operator.
- The maximum load which may be telescoped is limited by hydraulic pressure, boom angle, and boom lubrication. It is safe to attempt to telescope any load within the limits of the load rating chart.

### INFORMATION

- Deductions must be made from rated loads for stowed jib, optional attachments, hooks and loadlocks (see deduction chart). Weights of slings and other load handling devices shall be considered a part of the load.
- Crane load ratings with outriggers are based on outriggers and stabilizers extended and set with all load removed from the carrier wheels.
- Load ratings do not exceed 85% of tipping load.

### DEFINITIONS

- Operating radius is the horizontal distance from the axis of rotation to the center of the vertical hoist line or load hook with load suspended.
- Loaded boom angle as shown in the Load Ratings Chart is the included angle between the horizontal and longitudinal axes of the boom base after lifting rated load at rated radius.

For more information, product demonstration, or details on purchase, lease and rental plans, please contact your local Terex Cranes dealer.

We reserve the right to amend these specifications at any time without notice. The only warranty applicable is our standard written warranty applicable to the particular product and sale. We make no other warranty, expressed or implied.

Waverly Operations  
 106 12th Street S.E.  
 Waverly, IA 50677-9466 USA  
 TEL: (319) 352-3920  
 FAX: (319) 352-5727  
 E-MAIL: inquire@terexwaverly.com  
 WEB: http://www.terex-cranes.com