

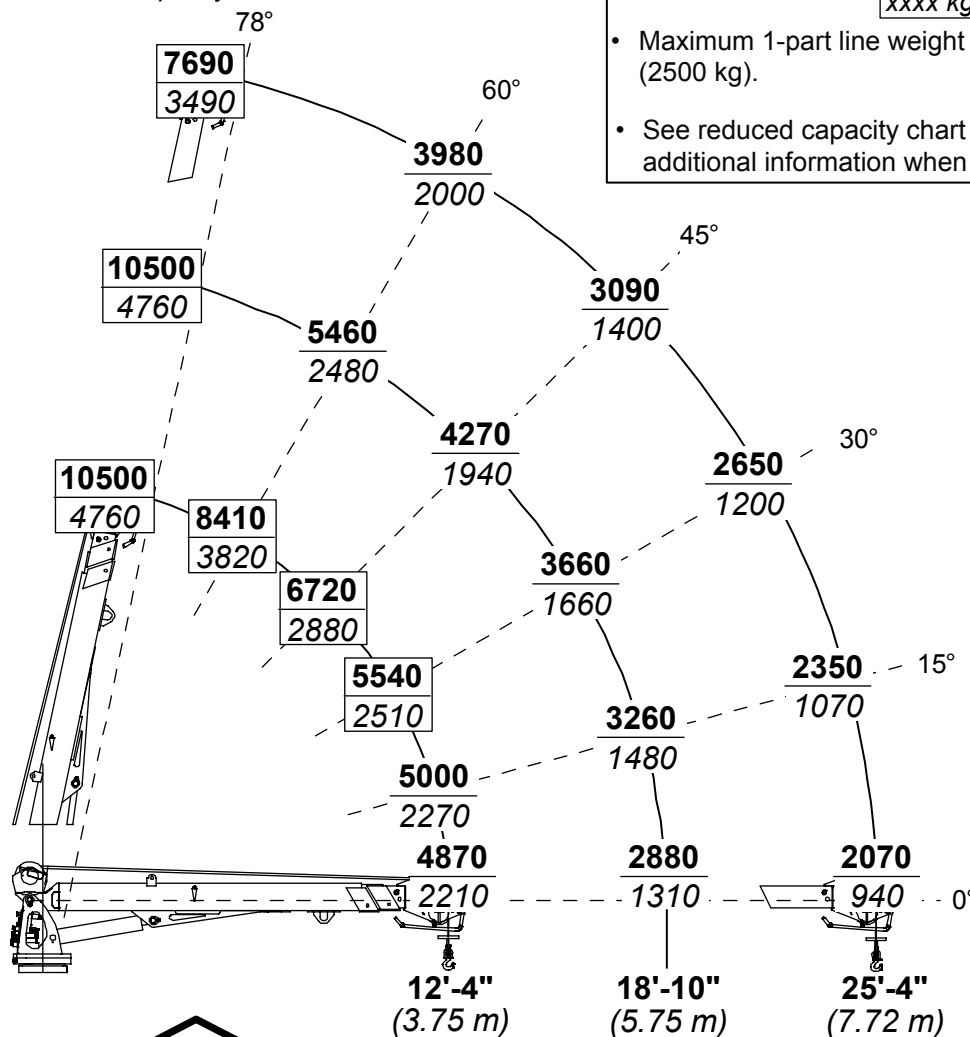
Capacity Chart, 6025

6025 HYDRAULIC CAPACITY CHART

The weight of load-handling devices is part of the load lifted and must be deducted from the rated capacity.

- Values in the box indicate the use of 2-part line is required.

xxxx lb
xxxx kg
- Maximum 1-part line weight is 5500 lb (2500 kg).
- See reduced capacity chart for additional information when applicable.



IOWA MOLD TOOLING CO., INC.
 BOX 189, GARNER, IA 50438-0189
 TEL: 641-923-3711 FAX: 641-923-2424

70396096