

### DEDUCTIONS

Overhaul Weight	40 lb
Snatch Block	40 lb
2-Manbasket SLR Platform	700 lb

### WEIGHTS

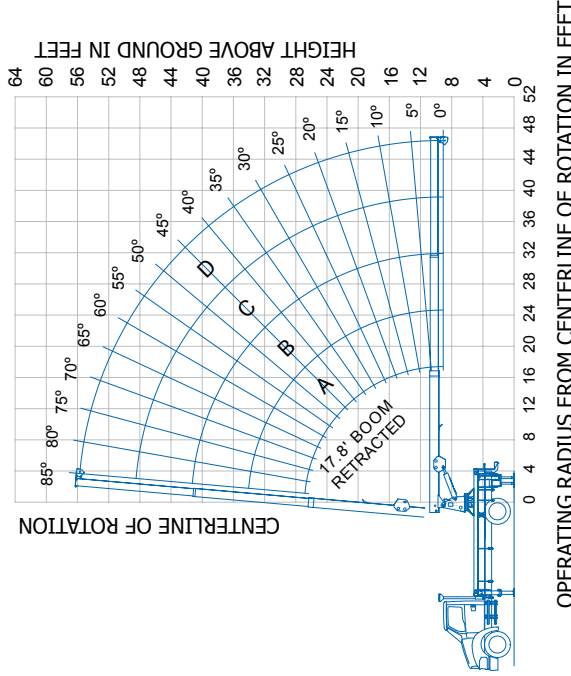
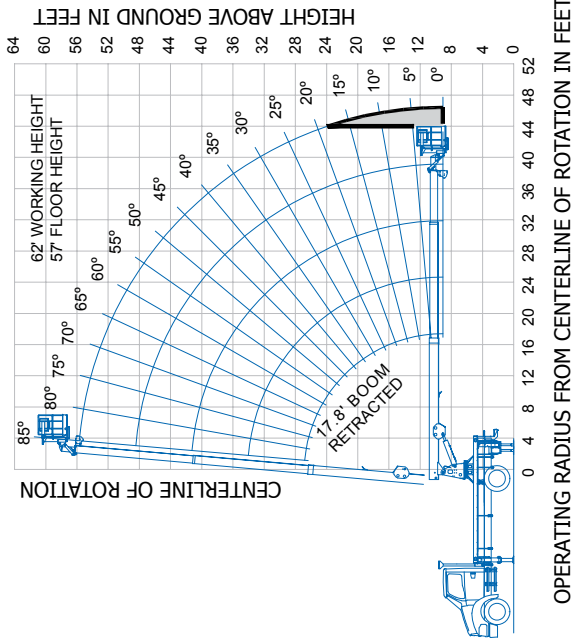
1 Part Line	2 Part Line	3,500 lb	6,000 lb	3/8" 6 x 25 IWRC (3.5:1 SF) 13,120 lb min. breaking strength

**WARNING**

Anti-two-block system, if supplied, must be in good operating condition before operating crane.

Refer to the owner's manual.

Keep at least three wraps of load line on the drum at all times.



**LOAD CHART FOR CRANE APPLICATIONS ONLY**

**MAIN BOOM LOAD RATINGS IN LBS. WITH OUTRIGGERS FULLY EXTENDED**

Operating Radius	Boom Length		
	A	B	C
17.8 Feet	25.1 Feet	32.3 Feet	39.6 Feet
8	6,000 lb	6,000 lb	6,000 lb
10	6,000 lb	5,150 lb	4,510 lb
12	5,710 lb	4,540 lb	3,900 lb
14	5,260 lb	4,100 lb	3,460 lb
16	4,920 lb	3,770 lb	3,120 lb
18	4,510 lb	3,460 lb	2,850 lb
20	4,100 lb	3,180 lb	2,650 lb
24	3,330 lb	2,650 lb	2,390 lb
28	2,650 lb	2,330 lb	2,060 lb
32	2,090 lb	1,830 lb	1,640 lb
36	1,650 lb	1,460 lb	1,320 lb
40	1,510 lb	1,320 lb	1,210 lb
44	1,110 lb	1,110 lb	1,110 lb

The Gray Area represents a "no work" zone, do not place the basket in this area.

Meets ANSI B30.5 Requirements - Do not operate crane or accessories within 10' (3.05 m) of live power lines. NOTICE: This chart is for reference only and must not be used for lifting purposes. Consult factory for other boom options.