

# THE PK 16502 PERFORMANCE UNDERLINES THE INNOVATIVE PROWESS OF PALFINGER

DECADES OF RESEARCH AND DEVELOPMENT FROM PALFINGER

# PK 16502 Performance

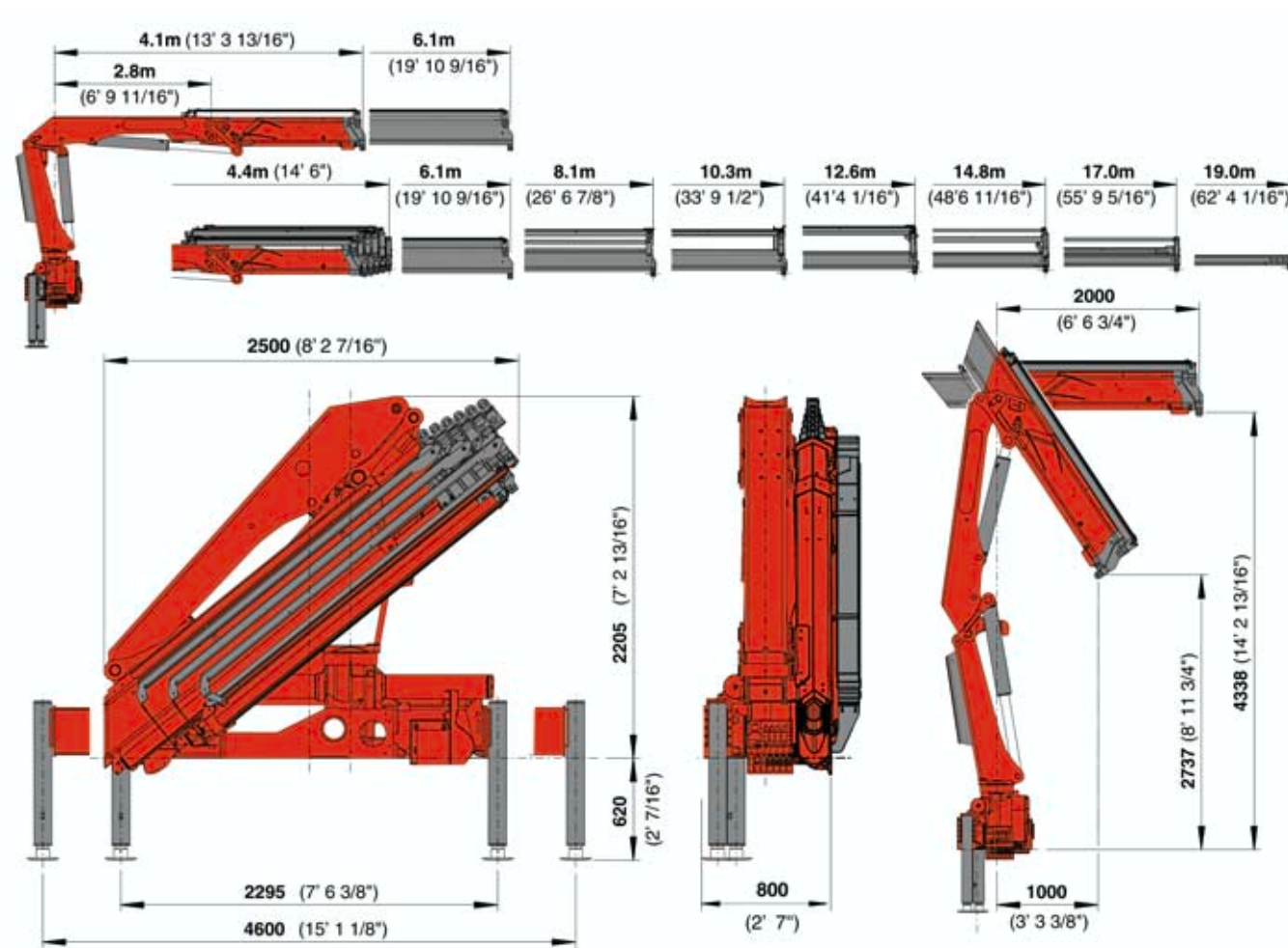
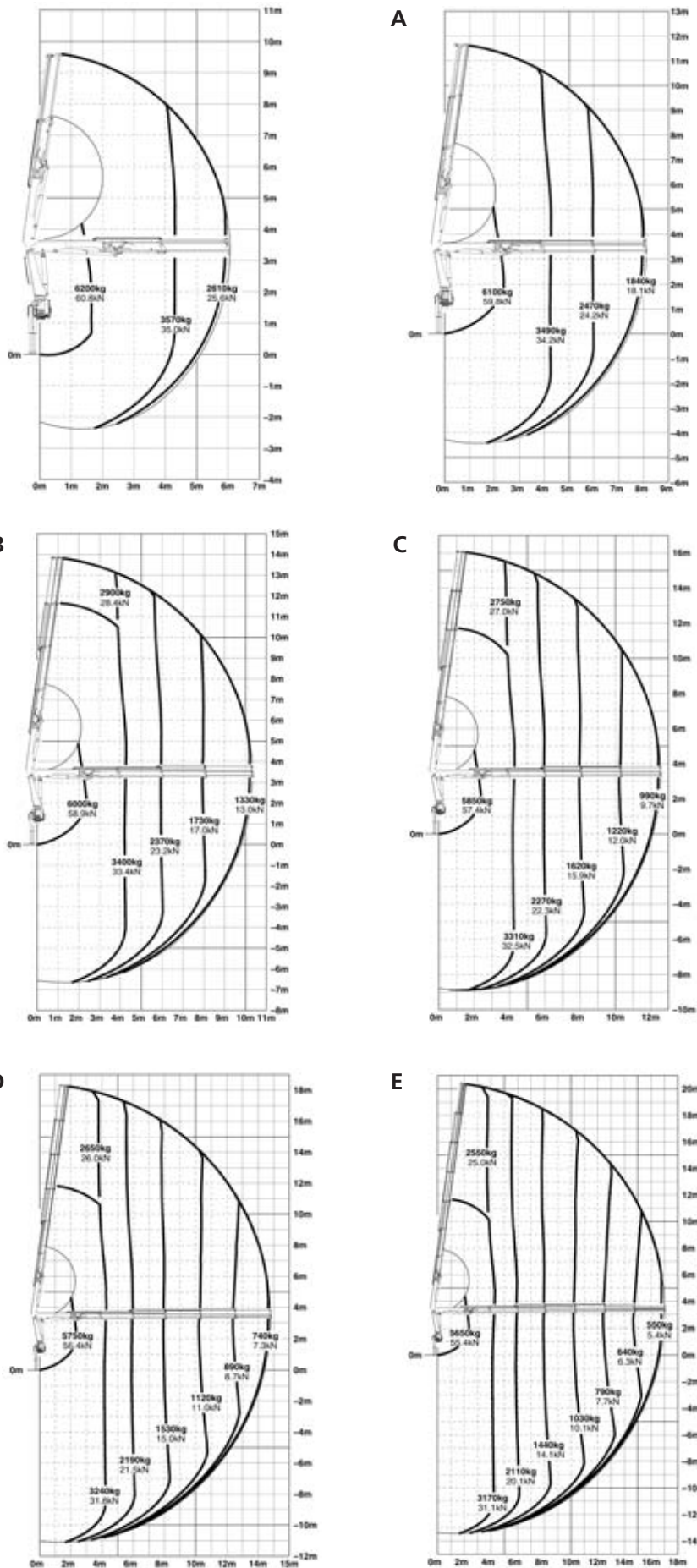


## Max. lifting capacities

PK 16502 Performance	
hydraulic	
Outreach	Capacity
1.7 m	60.8 kN/6200 kg
4.3 m	35.0 kN/3570 kg
5.9 m	25.6 kN/2610 kg
PK 16502 Performance A	
hydraulic	
Outreach	Capacity
2.2 m	59.8 kN/6100 kg
4.3 m	34.2 kN/3490 kg
5.9 m	24.2 kN/2470 kg
7.9 m	18.1 kN/1840 kg
PK 16502 Performance B	
hydraulic	
Outreach	Capacity
2.2 m	58.9 kN/6000 kg
4.3 m	33.4 kN/3400 kg
5.9 m	23.2 kN/2370 kg
7.9 m	17.0 kN/1730 kg
10.2 m	13.0 kN/1330 kg
manual	
12.4 m	10.0 kN/1020 kg
14.6 m	7.9 kN/ 810 kg
16.8 m	6.5 kN/ 660 kg
PK 16502 Performance C	
hydraulic	
Outreach	Capacity
2.2 m	57.4 kN/5850 kg
4.3 m	32.5 kN/3310 kg
5.9 m	22.3 kN/2270 kg
7.9 m	15.9 kN/1620 kg
10.2 m	12.0 kN/1220 kg
12.4 m	9.7 kN/ 990 kg
manual	
14.6 m	7.7 kN/ 790 kg
16.8 m	6.3 kN/ 640 kg
18.8 m	5.3 kN/ 540 kg
PK 16502 Performance D	
hydraulic	
Outreach	Capacity
2.2 m	56.4 kN/5750 kg
4.3 m	31.8 kN/3240 kg
5.9 m	21.5 kN/2190 kg
7.9 m	15.0 kN/1530 kg
10.2 m	11.0 kN/1120 kg
12.4 m	8.7 kN/ 890 kg
14.6 m	7.3 kN/ 740 kg
manual	
16.8 m	5.9 kN/ 600 kg
18.8 m	5.0 kN/ 510 kg
PK 16502 Performance E	
hydraulic	
Outreach	Capacity
2.2 m	55.4 kN/5650 kg
4.3 m	31.1 kN/3170 kg
5.9 m	20.7 kN/2110 kg
7.9 m	14.1 kN/1440 kg
10.2 m	10.1 kN/1030 kg
12.4 m	7.7 kN/ 790 kg
14.6 m	6.3 kN/ 640 kg
16.9 m	5.4 kN/ 550 kg
manual	
18.8 m	4.5 kN/ 460 kg

The reaches are indicated for a 20° main boom position and are therefore not the maximum ones.

## PK 16502 Performance



PK 16502 Performance			
Technical specifications (DIN 15018 H1-B3)			
Max. lifting moment	15.5 mt/152.1 kNm	112140 ft.lbs	
Max. lifting capacity	6200 kg/60.8 kN	13670 lbs	
Max. hydraulic outreach	17.0 m	55' 9"	
Maximum outreach	19.0 m	62' 4"	
Slewing angle	420°		

PK 16502 Performance		
Standard crane		
Slewing torque	1.8 mt/17.7 kNm	13050 ft.lbs
Stabilizer spread standard	4.6 m	15' 1"
Stabilizer spread maximum	6.6 m	21' 8"
Fitting space required	0.80 m	2' 7"
Width folded	2.5 m	8' 2"
Operating pressure	330 bar	4785 psi
Recommended pump capacity by radio remote control and LS-System	from 60 l/min. 13.2 imp.gal./min. to 80 l/min. 17.6 imp.gal./min.	15.9 US gal./min. 21.1 US gal./min.
Dead weight (without mounting parts, pump and oil)	1672 kg	3690 lbs

Executions shown in the leaflet are not always corresponding to standard execution. Country-specific regulations are to be observed upon attachment.



We reserve the right to change design and specification without prior notice.

www.palfinger.com



## THE TRULY MULTITALENTED CRANE



WITH THE RIGHT ACCESSORIES THE PK 16502 *PERFORMANCE* MASTERS ANY JOB

THE PALFINGER ADVANCED PACKAGE OF EXTENDED EQUIPMENT COMES AS STANDARD WITH THIS CRANE

THE PK 16502 *PERFORMANCE* IS EQUIPPED WITH THE PROVEN PALFINGER POWER LINK SYSTEM

The PK 16502 *Performance* is a universal crane. Whether handling building materials or unit loads, whether in municipal service with a clamshell grab or on recycling duty - it offers everything that tough daily duty requires. The appearance of the *Performance* cranes underlines the new line from PALFINGER: function and design in synergy. The completely enclosed electronics, the internally routed hydraulic hoses and many detail improvements guarantee safety at work, easy maintenance and reliability.



#### Load-holding valves

They prevent the crane boom from dropping and are fitted as standard on both lifting and extension cylinders. The valves are positioned in such a way that they are protected from accidental damaged.



#### Internally routed oil ducts

On the multiple extensions there are no hydraulic hoses between the cylinders. The internally routed oil passages make it possible to have a compact boom design.



#### Functional design

- Enclosure of the entire electronic system
- Enclosure in the area of the control valve
- Enclosure of the hoses behind the crane column
- Spiral tube hose between base frame and crane column



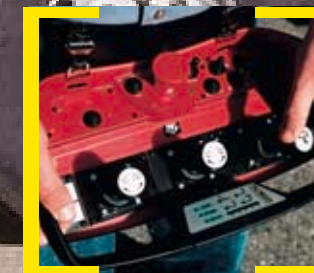
#### Central lubrication

for all bearings on the base frame

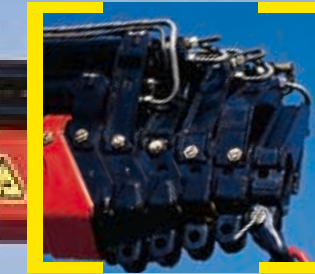


#### The Advanced Package

- PALFINGER radio control
- PALTRONIC 50
- Oil cooler
- External 200 l additional tank
- The complete Performance design package
- Electronic HPLS (High Power Lifting System)



#### Adjustable slide blocks



#### Return oil use

By using of the return oil flow in the extension system, the operating speed is increased by 30 per cent.



#### Hose equipment for accessories

With this option you can provide the oil supply to accessories. The hoses are routed in compact troughs and plastic link chains. They are thus optimally protected.



#### Extension system

The extension cylinders are guided in Jordal rails over rollers.



#### Height compensation

#### Control valve

The load-sensing proportional valve in combination with the PALFINGER radio control system permits very sensitive crane control.



#### Outrigger widths

The PK 16502 *Performance* fits to all normal truck chassis designs. Three outrigger widths are possible: 4.6 m mechanical, 5.6 m respectively 6.6 m hydraulic.

