



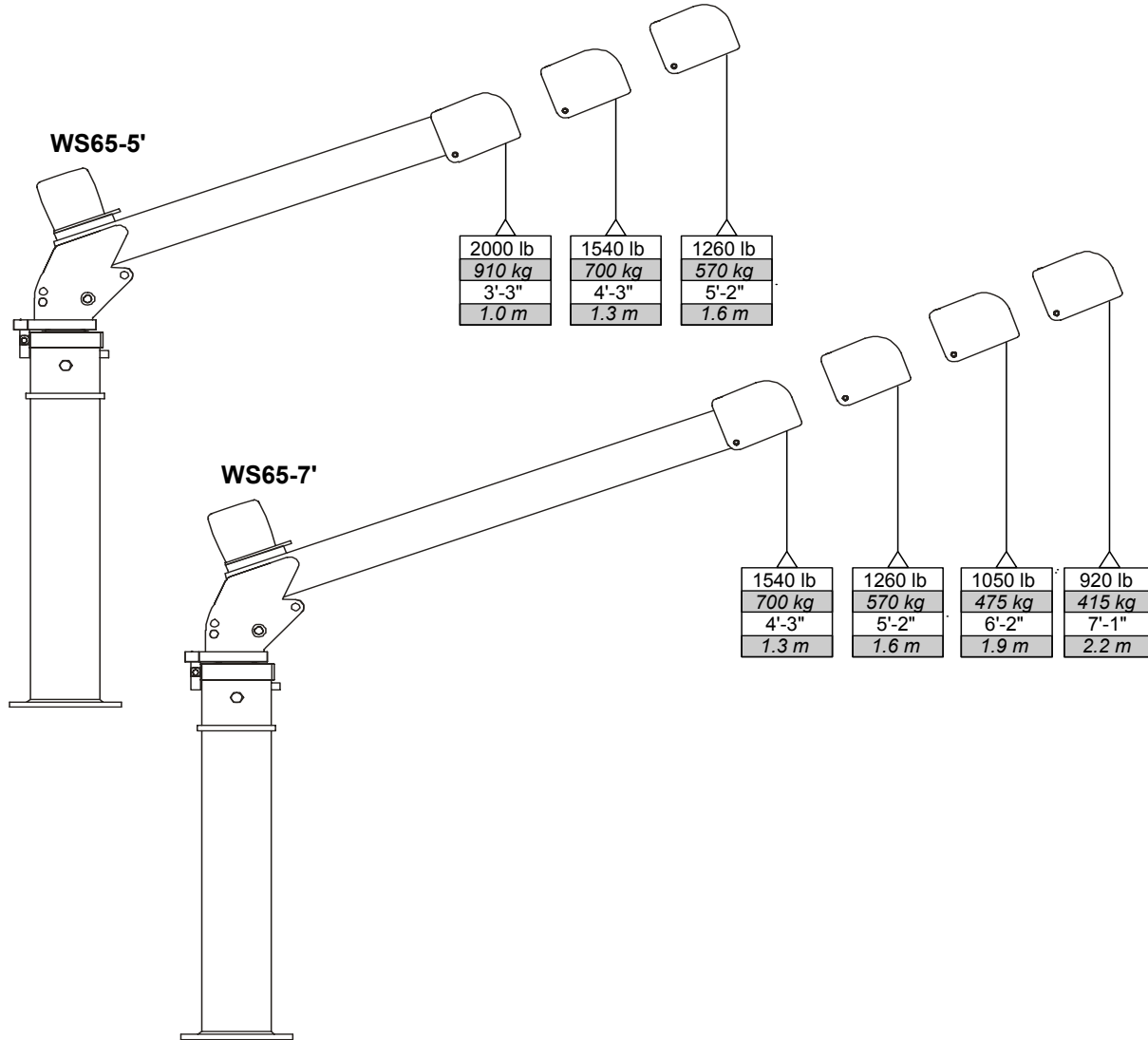
Small Telescopic

(continued)

Telescopic Crane

Technical Specifications

Lifting Capacities



	WS65-5'	WS65-7'
Crane Rating*	6500 ft-lb (0.9 tm)	6500 ft-lb (0.9 tm)
Maximum Horizontal Reach	5'-2" (1.57 m)	7'-1" (2.16 m)
Maximum Vertical Reach (short base)	5'-7" (1.70 m)	7'-4" (2.24 m)
Maximum Vertical Reach (tall base)	8'-10" (2.69 m)	11'-9" (3.6 m)
Maximum Capacity	2000 lb (910 kg)	1540 lb (700 kg)
Max Cap @ Max Reach	1260 lb (570 kg)	920 lb (415 kg)
Crane Weight (short base) **	160 lb (72.6 kg)	180 lb (90.7 kg)
Crane Weight (tall base) **	220 lb (99.8 kg)	260 lb (117.9 kg)
Crane Storage Height (short base)	31" (0.79 m)	34" (0.86 m)
Crane Storage Height (tall base)	46" (1.17 m)	59.5" (1.51 m)
Mounting Space (base plate)	10" x 10" (25.4 cm x 25.4 cm)	10" x 10" (25.4 cm x 25.4 cm)
Mounting Space (mounting bolt pattern)	8" x 8" (20.3 cm x 20.3 cm)	8" x 8" (20.3 cm x 20.3 cm)
Rotation	346°	346°

* Crane rating (ft-lb) is the rated load (lb) multiplied by the respective distance (ft) from centerline of rotation with all extensions retracted and the inner and outer boom in a horizontal position, per ANSI B30.22.

** Crane weight does not include outriggers.

