



9000/1295:99900918: 20111221

1-3



## 9000 SERIES CRANE SPECIFICATIONS

### GENERAL

	1H	2H	2H1M 3H	3H1M
*CRANE RATING (ANSI B30.22)	90400 ft-lbs	90400 ft-lbs	89000 ft-lbs	87800 ft-lbs
*MAXIMUM CRANE RATING	90400 ft-lbs	90400 ft-lbs	90400 ft-lbs	90400 ft-lbs
HORIZONTAL REACH from centerline of rotation	19'-8"	25'-7"	31'-3"	36'-7"
HYDRAULIC EXTENSION 1-STAGE HYDRAULIC (1H)	64"	None	None	None
2-STAGE HYDRAULIC (2H)	None	64" x 2	64" x 2	64" x 2
3-STAGE HYDRAULIC (3H)	None	None	64" x 3	64" x 3
MANUAL EXTENSION 2-STAGE HYDRAULIC (2H)	None	None	64"	64" x 2
3-STAGE HYDRAULIC (3H)	None	None	None	64"
VERTICAL REACH from mounting surface	26'-7"	32'-1"	37'-4"	42'-6"
VERTICAL REACH from ground / 38" frame ht.	29'-9"	35'-3"	40'-6"	45'-8"
CRANE WEIGHT	3960 lbs	4245 lbs	4375 lbs (2H1M) 4515 lbs (3H)	4580 lbs (3H1M)
STABILIZER SPAN	12'-3"	12'-3"	12'-3"	12'-3"
STABILIZER PADS	12" x 12"	12" x 12"	12" x 12"	12" x 12"
CRANE STORAGE HEIGHT from mounting surface	8'-0"	8'-0"	8'-0"	8'-0"
CRANE STORAGE HEIGHT from ground / 38" frame ht.	11'-2"	11'-2"	11'-2"	11'-2"
**MOUNTING SPACE REQUIRED	30"	30"	30"	30"
ROTATIONAL TORQUE	12660 ft-lbs	12660 ft-lbs	12660 ft-lbs	12660 ft-lbs
OPTIMUM PUMP CAPACITY	11 U.S. GPM	11 U.S. GPM	11 U.S. GPM	11 U.S. GPM
SYSTEM OPERATING PRESSURE	2800 PSI	2800 PSI	2800 PSI	2800 PSI
OIL RESERVOIR CAPACITY	20 U.S. Gallons	20 U.S. Gallons	20 U.S. Gallons	20 U.S. Gallons
***VERTICAL CENTER OF GRAVITY from mounting surface	27'-1/4"	27'-1/2"	27'-3/4"	28"
***HORIZONTAL CENTER OF GRAVITY from centerline of rotation	3/4"	1/2"	3/8"	1/4"
HOOK APPROACH - HORIZONTAL from centerline of rotation	31"	31"	36"	36"
HOOK APPROACH - VERTICAL from mounting surface	88"	88"	84"	84"

\* Maximum Crane Rating (ft-lbs) is defined as that rated load (lbs) which when multiplied by its respective distance (ft) from centerline of rotation gives the greatest ft-lb value.

ANSI B30.22 Crane Rating (ft-lbs) = With all extensions retracted and inner plus outer boom in a horizontal position, rated load (lbs) X respective distance (ft) from centerline of rotation = nominal ft-lb value.

\*\* Allow an additional 5" between the cab and crane base for swing clearance.

\*\*\* Crane in stowed position.

IOWA MOLD TOOLING CO., INC.  
BOX 189, GARNER, IA 50438-0189  
TEL: 641-923-3711 FAX: 641-923-2424



9000/1295:99900918: 20111221

1-4

## PERFORMANCE CHARACTERISTICS

ROTATION:	450°	30 seconds
INNER BOOM ELEVATION:	-52° to +75°	24 seconds
OUTER BOOM ARTICULATION:	139°	23 seconds
TELESCOPIC EXTENSIONS (3H):		
1st Stage	64"	30 seconds
2nd Stage	64"	15 seconds
3rd Stage	64"	8 seconds
TELESCOPIC EXTENSIONS (2H):		
1st Stage	64"	21 seconds
2nd Stage	64"	9 seconds
SINGLE STAGE EXTENSION (1H):	64"	12 seconds
VERTICAL STABILIZER STROKE:	24"	7 seconds
POWER OUT STABILIZER (OPTION)	26"	3 seconds

## POWER SOURCE

Integral-mounted hydraulic pump and PTO application. Other standard power sources may be utilized - minimum power required is 21 horsepower.

## CYLINDER HOLDING VALVES

The holding sides of all standard cylinders are equipped with integral-mounted holding or counter-balance valves to prevent sudden cylinder collapse in case of hose or other hydraulic failure. The stabilizer cylinders have positive, pilot-operated holding valves that open only on command.

The inner, outer and extension cylinders have single pilot-operated counter balance valves. The counter-balance valve serves several functions. First, it is a holding valve. Secondly, it is so constructed that it will control the lowering function and allow that motion to be feathered while under load. Finally, if a hose breaks, the only oil loss will be that in the hose.

## ROTATION SYSTEM

Rotation of the crane is accomplished through a turntable bearing, powered by a high torque hydraulic motor through a ring and pinion type spur gear train. Total gear reduction is 50.7 to 1.

## HYDRAULIC SYSTEM

The hydraulic system is an open centered, full pressure system, requiring 11 GPM optimum oil flow, at 2800 PSI. Eight-spool, stack-type control valve, six of which are used for the standard crane and the remaining two are plugged, but easily adapted for additional optional features. Dual operational handles for six functions are located at both sides of crane for convenient operation. System includes hydraulic oil reservoir, suction-line strainer, pump, 8-section control valve, return-line filter and all hoses and fittings.

***IMT reserves the right to change specifications and design without notice.***

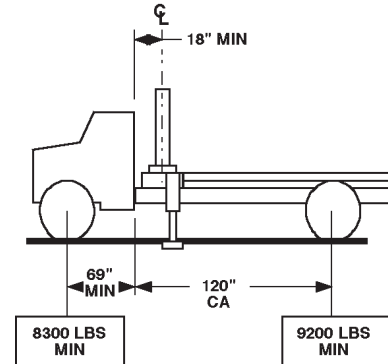
9000/1295:99900918:20111220

1-5

### MINIMUM CHASSIS SPECIFICATIONS- FOR STANDARD 9000 SERIES CRANE

<b>CRANE MOUNT</b>	Behind Cab
<b>CRANE WORKING AREA</b>	360°
<b>CHASSIS STYLE</b>	Conventional Cab
<b>WHEELBASE</b>	189"
<b>CAB-TO-AXLE</b>	120"
<b>FRONT AXLE RATING (GAWR)</b>	10,000 lbs
<b>REAR AXLE RATING (GAWR)</b>	18,500 lbs
<b>RBM</b>	1,200,000
<b>FRAME SECTION MODULUS</b>	24 cubic inches
<b>FRAME YIELD STRENGTH</b>	50,000
<b>MINIMUM FINISHED UNIT WEIGHT TO MAINTAIN VEHICLE STABILITY</b>	
<b>FRONT AXLE</b>	8300
<b>REAR AXLE</b>	9200
<b>TOTAL FINISHED UNIT WT.</b>	17500

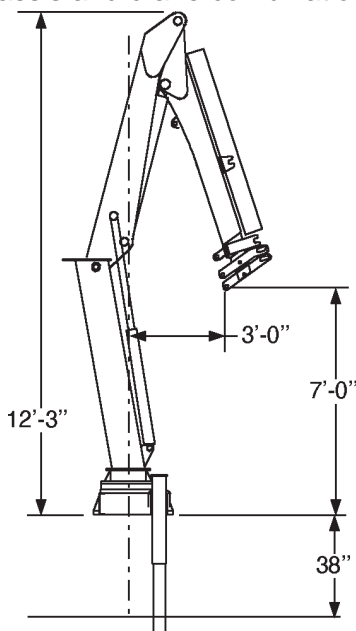
### 360° WORKING AREA



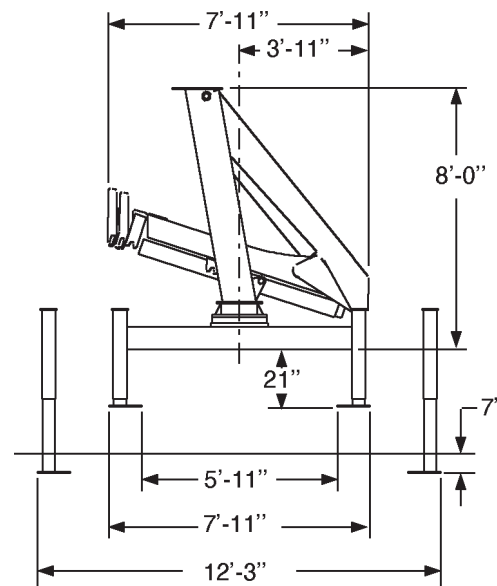
Allows lifting full capacity load in a 360° arc when crane is installed immediately behind the cab. Great care should be taken when swinging the load from rear of vehicle to front of vehicle since the front axle springs will compress, thus affecting the levelness of the vehicle.

**NOTES:**

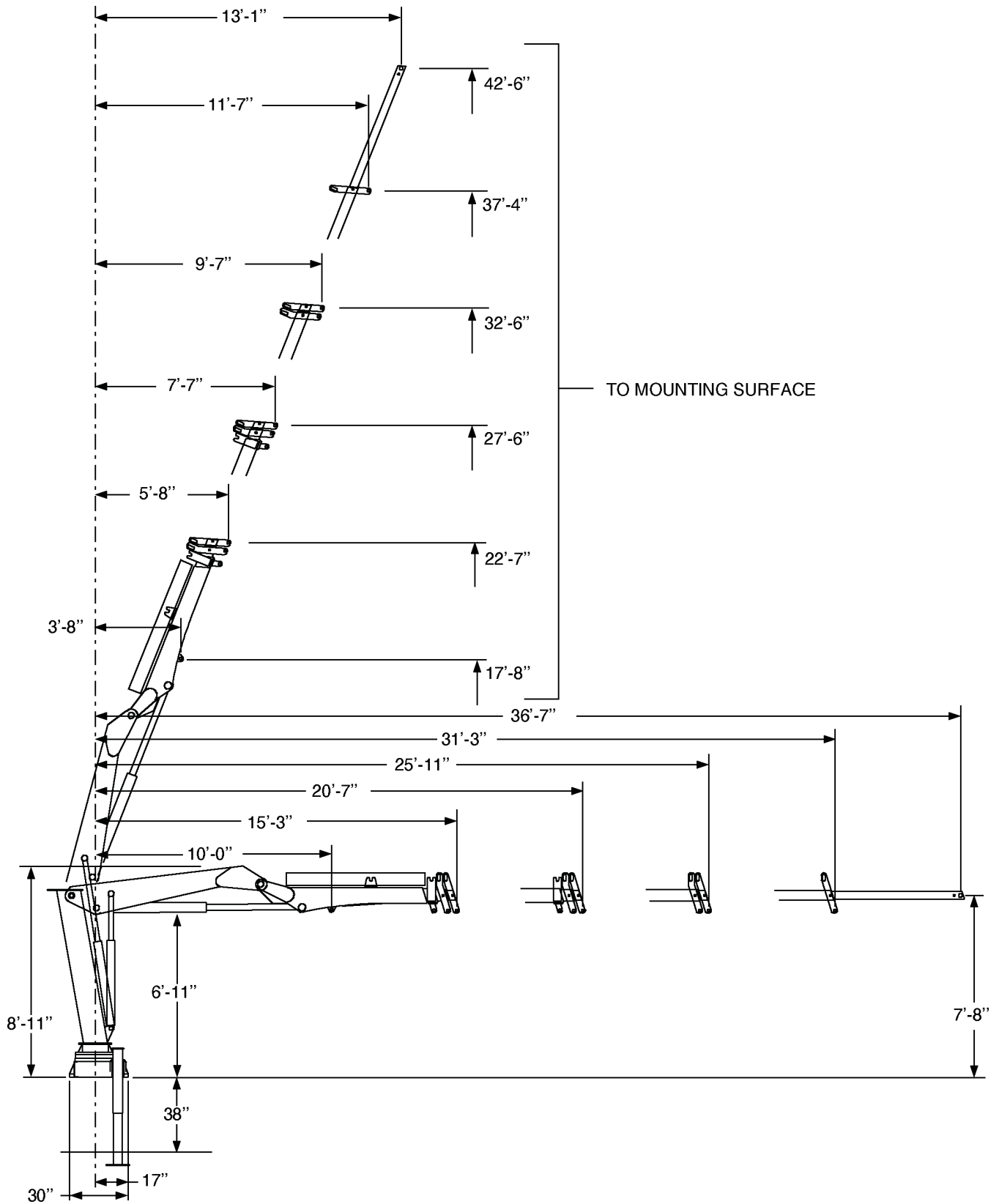
1. GAWR means Gross Axle Weight Rating and is dependent on all components of the vehicle such as axles, tires, wheels, springs, brakes, steering and frame strength meeting the manufacturer's recommendations. Always specify GAWR when purchasing a truck.
2. Minimum axle requirements may increase with use of diesel engines, longer wheelbase or service bodies. Contact the factory for further information.
3. Weight distribution calculations are required to determine final axle loading.
4. All chassis and crane combinations must be stability tested to ensure stability per ANSI B30.22



**HOOK APPROACH**



**STOWED POSITION & STABILIZER DIMENSIONS**



**GEOMETRIC CONFIGURATION - 9000 SERIES CRANE**

IOWA MOLD TOOLING CO., INC. ● BOX 189 ● GARNER ● IA ● 50438 ● 641-923-3711

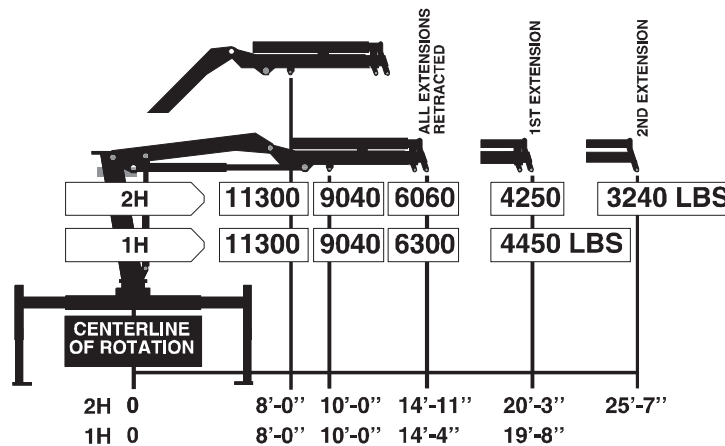
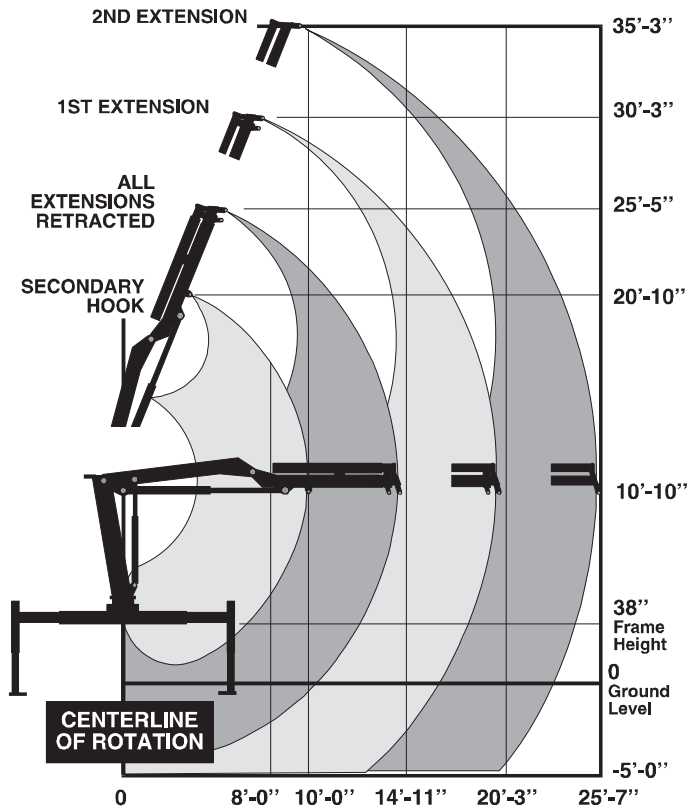
Capacities through geometric range are limited to those shown in horizontal position.



# 9000

## Series Crane 1H & 2H

- Loads shown are based on crane structural or hydraulic capability. Before lift is made, stability must be checked per SAE J765A.
- Working loads will be limited to those shown. Deduct the weight of load handling devices.
- Winch lifting capacity is limited to those shown. Maximum 5000 lbs for 1-part line.



71393780

**CAPACITY CHART-1H & 2H**



IOWA MOLD TOOLING CO., INC. ● BOX 189 ● GARNER ● IA ● 50438 ● 641-923-3711  
 Capacities through geometric range are limited to those shown in horizontal position.



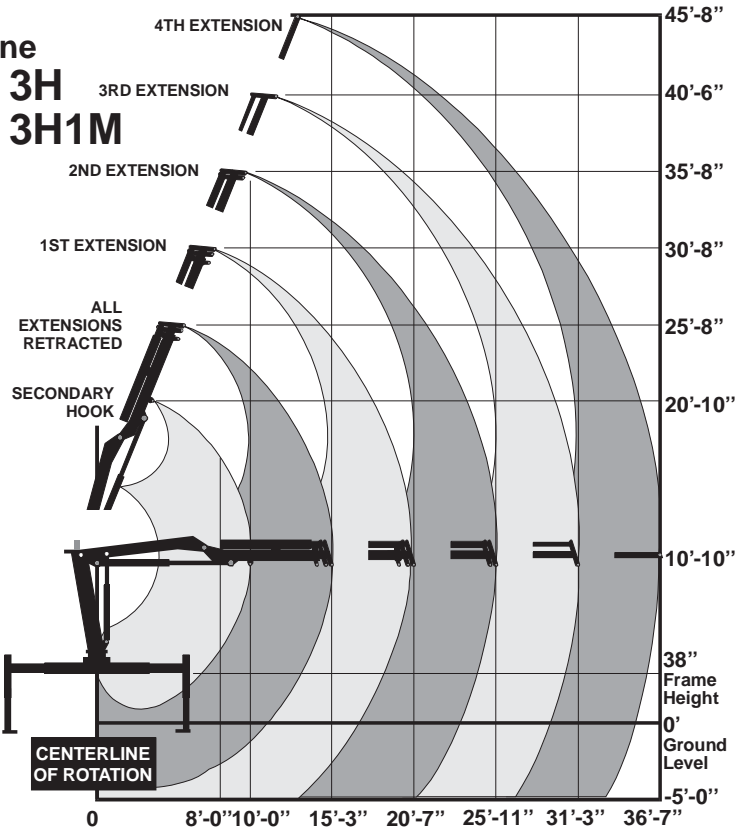
- Loads shown are based on crane structural or hydraulic capability. Before lift is made, stability must be checked per SAE J765A.
- Working loads will be limited to those shown. Deduct the weight of load handling devices.
- Winch lifting capacity is limited to those shown - Maximum 5000 lbs for 1-part line.

# 9000

## Series Crane

### 2H1M & 3H

### 2H2M & 3H1M



Configuration	0'	8'-0"	10'-0"	15'-3"	20'-7"	25'-11"	31'-3"	36'-7"
2H2M/3H1M	11300	9000	5760	3950	3050	2260	1700 LBS	
2H1M/3H	11300	9000	5840	4060	3150	2360 LBS		

71393781

**CAPACITY CHART-2H1M & 3H - 3H1M**





## Mechanics Trucks

IMT mechanics trucks are powerful, durable, and equipped with brand-new features to make your job easier.

### DOMINATOR®

Model*	Crane Capacity	Min. Chassis (cab-to-axle)	Storage	Body Weight
DSC12 (11')	Up to 12,000 ft-lb (3 tm)	85" (215.9 cm)	93.3 cu ft (2.6 m <sup>3</sup> )	2150 lb (975 kg)
DSC20 (9')	Up to 20,000 ft-lb (3 tm)	60" (152.4 cm)	97.2 cu ft (2.7 m <sup>3</sup> )	1850 lb (839.1 kg)
DSC20 (11')	Up to 20,000 ft-lb (3 tm)	84" (213.4 cm)	120.5 – 142.2 cu ft (3.4 – 4 m <sup>3</sup> )	2200 – 2300 lb (998 – 1043.2 kg)
Dominator Propane Body	Up to 38,000 ft-lb (5.3 tm)	60" (152.4 cm)	LH 64.5 cu ft (1.8 m <sup>3</sup> ) RH 15 cu ft (0.4 m <sup>3</sup> )	3700 lb (1678 kg)
Dominator I (9')	Up to 38,000 ft-lb (5.3 tm)	60" (152.4 cm)	97.2 – 104.2 cu ft (2.8 – 3 m <sup>3</sup> )	2921 – 2971 lb (1325 – 1348 kg)
Dominator I (11')	Up to 38,000 ft-lb (5.3 tm)	84" (213.4 cm)	120.5 – 142.2 cu ft (3.4 – 4 m <sup>3</sup> )	3297 – 3447 lb (1496 – 1564 kg)
Dominator II (11')	Up to 60,000 ft-lb (8.3 tm)	84" (213.4 cm)	144.5 – 168.4 cu ft (4.1 – 4.8 m <sup>3</sup> )	3650 – 3875 lb (1656 – 1758 kg)
Dominator II (11') Low Profile	Up to 60,000 ft-lb (8.3 tm)	84" (213.4 cm)	121.2 – 126.5 cu ft (3.4 – 3.6 m <sup>3</sup> )	3234 – 3300 lb (1467 – 1497 kg)
Dominator II (13')	Up to 60,000 ft-lb (8.3 tm)	108" (274.3 cm)	182.3 cu ft (5.2 m <sup>3</sup> )	4005 lb (1817 kg)
Dominator II (14')	Up to 60,000 ft-lb (8.3 tm)	120" (304.8 cm)	200.6 – 214.2 cu ft (5.7 – 6.1 m <sup>3</sup> )	4180 – 4310 lb (1896 – 1955 kg)
Dominator IV (14')	Up to 80,000 ft-lb (11.1 tm)	120" (304.8 cm)	219.6 – 225.4 cu ft (6.2 – 6.4 m <sup>3</sup> )	6355 – 6395 lb (2883 – 2900 kg)
Dominator IV (19')	Up to 80,000 ft-lb (11.1 tm)	120" (304.8 cm)	268.7 – 281.1 cu ft (7.6 – 8 m <sup>3</sup> )	7885 – 7952 lb (3577 – 3607 kg)

\*Raised right configuration.



## Lube Trucks and Skids

When you're looking for a lube truck with plenty of space and countless configurations, you're looking for a SiteStar® lube truck.

Total Compartment Storage Capacity	Available Polyethylene Fluid Tank Capacity (264 possible configurations)	Available Rectangle Steel Fuel Tank Capacity	Available Elliptical Steel Fuel Tank Capacity	Available Product Systems
108 cu ft (3.1 m <sup>3</sup> )	75 gal (284 L) 135 gal (511 L) 190 gal (719 L) 260 gal (984 L) 350 gal (1325 L)	480 gal (1817 L) 650 gal (2461 L) 800 gal (3028 L) 950 gal (3596 L)	1000 – 2000 gal (3785 – 7571 L)	<ul style="list-style-type: none"> <li>• Oil</li> <li>• Antifreeze</li> <li>• Water</li> <li>• Fuel</li> <li>• Oil Salvage</li> <li>• Antifreeze Salvage</li> <li>• Grease</li> </ul>

### LUBE SKID

Capacity	Weight	Length	Product Tanks	Available Configurations
220 gal (833 L)	(4) Tanks empty without grease 1592 lb (722 kg) (4) Tanks empty with grease 1712 lb (777 kg) (4) Tanks full without grease 3242 lb (1471 kg) (4) Tanks full with grease 3362 lb (1525 kg)	7' 4" (2.3 m)	Oil Salvage, Antifreeze, Water All tanks 55 gal (208 L)	8 possible configurations



## Tire Trucks

These vehicles combine maximum load and storage capacity with a host of options that enable you to customize each unit to your application.

### OTR

Model	Min. Chassis Gross Vehicle Weight Rating	Max. Crane Capacity at 10 ft	Max. Tire Weight Handled with TireHand	Approx. Total Payload Available*	Storage
Commander® I	26,000 lb (11,793 kg)	5200 lb (2359 kg)	N/A	Up to 8500 lb (3856 kg)	76 cu ft (2.2 m <sup>3</sup> )
Commander II	26,000 lb (11,793 kg)	7400 lb (3357 kg)	Up to 3000 lb (1361 kg)	Up to 10,000 lb (4536 kg)	87 cu ft (2.5 m <sup>3</sup> )
Commander III	33,000 lb (14,968 kg)	12,000 lb (5443 kg)	Up to 5000 lb (2268 kg)	Up to 7000 lb (3175 kg)	Up to 120 cu ft (3.4 m <sup>3</sup> )
Commander IV	60,000 lb (27,215 kg)	22,500 lb (10,206 kg)	Up to 14,000 lb (6350 kg)	Up to 13,000 lb (5897 kg)	137 cu ft (3.9 m <sup>3</sup> )

\*Chassis GVWR dependent.

### TIRE MANIPULATOR

Model	TireHand Weight	Tire Size Capacity	Max. Capacity	Clamping Span	Carrier Vehicle Capacity — Loader	Carrier Vehicle Capacity — Forklift
TH1449A	2020 lb (916.3 kg)	18-25 37.5-39	4200 lb (1905 kg)	50" – 110" (127 – 279.4 cm)	3.5 cu yd (2.7 m <sup>3</sup> )	15,000 lb (6804 kg)
TH2551B	8640 lb (3920 kg)	18-25 50/65-51	10,000 lb (4536 kg)	52" – 135" (132.1 – 342.9 cm)	4.5 cu yd (3.4 m <sup>3</sup> )	30,000 lb (13,608 kg)
TH2557B	8100 lb (3674 kg)	18-25 53.5/85-57	13,000 lb (5897 kg)	43" – 160" (109.2 – 406.4 cm)	7 cu yd (5.4 m <sup>3</sup> )	36,000 lb (16,329 kg)
TH3565	16,600 lb (7530 kg)	18-25 57.5/85-57	25,000 lb (11,340 kg)	41" – 164" (104 – 417 cm)	8 cu yd (6.1 m <sup>3</sup> )	55,000 lb (24,947 kg)

### TIRE SERVICE — FARM TIRE

Model	Min. Chassis Gross Vehicle Weight Rating	Max. Crane Capacity at 10 ft	Approx. Total Payload Available*	Deck Cargo Area	Storage
Predator® 8511	11,000 lb (4989 kg)	3000 lb (1361 kg)	Up to 5450 lb (2472 kg)	67.1 sq ft (6.2 m <sup>2</sup> )	85 cu ft (2.4 m <sup>3</sup> )
Predator 8513	11,000 lb (4989 kg)	N/A	Up to 6250 lb (2835 kg)	81.3 sq ft (7.6 m <sup>2</sup> )	85 cu ft (2.4 m <sup>3</sup> )
Predator 8516	19,000 lb (8618 kg)	N/A	Up to 8700 lb (3946 kg)	100 sq ft (9.3 m <sup>2</sup> )	89 cu ft (2.5 m <sup>3</sup> )
980 MetroStar	8800 lb (3992 kg)	N/A	Up to 1850 lb (839 kg)	44.5 sq ft (4.1 m <sup>2</sup> )	27.5 cu ft (0.8 m <sup>3</sup> )

\*Chassis GVWR dependent.

### TIRE SERVICE — MINI BOOM

Model	Min. Chassis Gross Vehicle Weight Rating	Max. Crane Capacity at 10 ft	Approx. Total Payload Available*	Deck Cargo Area	Storage
Predator 8511CR	15,000 lb (6804 kg)	3000 lb (1361 kg)	Up to 5450 lb (2472 kg)	67.1 sq ft (6.2 m <sup>2</sup> )	85.0 cu ft (2.4 m <sup>3</sup> )
Predator 8513CR	17,500 lb (7938 kg)	3000 lb (1361 kg)	Up to 6250 lb (2835 kg)	81.3 sq ft (7.6 m <sup>2</sup> )	85.0 cu ft (2.4 m <sup>3</sup> )

\*Chassis GVWR dependent.

## Air Compressors

IMT offers a complete family of compressed air systems, including reciprocating and rotary series.



Model	Type	Power Source	Delivery	Wet Weight
CAS435HA	Piston	Hydraulic drive	35 cfm @ 100 psi (16.52 L/S @ 6.9 bar)	200 lb (91 kg)
CAS4110HT	Piston	Hydraulic drive	110 cfm @ 150 psi (51.91 L/S @ 10.3 bar)	870 lb (395 kg)
CAS4110HU	Piston	Hydraulic drive	110 cfm @ 150 psi (51.91 L/S @ 10.3 bar)	770 lb (349 kg)
CAS2545	Rotary	Hydraulic drive	45 cfm @125 psi (21.24 L/S @ 8.6 bar)	290 lb (132 kg)
CAS3560	Rotary	Hydraulic drive	60 cfm @ 150 psi (28.32 L/S @ 10.3 bar)	370 lb (168 kg)
CAS60	Rotary	PTO direct drive	60 cfm @ 150 psi (28.32 L/S @10.3 bar)	280 lb (127 kg)
CAS85	Rotary	PTO direct drive	85 cfm @ 150 psi (40.12 L/S @10.3 bar)	300 lb (136 kg)

### COMPRESSOR /WELDER/ GENERATOR

Model	Power Source	Output	Wet Weight
CAS35WG	PTO driven (hydraulic pumps)	35 cfm @ 100 psi (16.52 L/S @ 6.9 bar) 250 amp welding 5000 watt generator	500 lb (227 kg)





## Telescopic Cranes

IMT telescopic cranes are compact, require minimal mounting space, and feature fast, efficient winch speeds.

### HYDRAULIC

Model	Rating	Horizontal Reach	Vertical Reach*	Max. Lift Capacity	Operating Weight
WS65-5	6500 ft-lb (0.9 tm)	5' 2" (1.6 m)	8' 10" (2.7 m)	2000 lb (907 kg)	220 lb (100 kg)
WS65-7	6500 ft-lb (0.9 tm)	7' 1" (2.2 m)	11' 9" (3.6 m)	2000 lb (907 kg)	250 lb (113 kg)
1015	10,500 ft-lb (1.4 tm)	15' 0" (4.6 m)	16' 1" (4.9 m)	3200 lb (1450 kg)	660 lb (299 kg)
1.5/10	10,850 ft-lb (1.5 tm)	9' 8" (2.9 m)	14' 3" (4.3 m)	2645 lb (1200 kg)	440 lb (199 kg)
2020	20,000 ft-lb (2.8 tm)	20' 0" (6.1 m)	20' 11" (6.4 m)	5000 lb (2268 kg)	920 lb (417 kg)
2820	28,000 ft-lb (3.9 tm)	20' 6" (6.2 m)	22' 2" (6.8 m)	5000 lb (2268 kg)	1600 lb (726 kg)
3020	30,000 ft-lb (4.2 tm)	20' 6" (6.2 m)	22' 5" (6.8 m)	6000 lb (2722 kg)	1455 lb (660 kg)
3820	38,000 ft-lb (5.3 tm)	20' 6" (6.2 m)	22' 5" (6.8 m)	7500 lb (3402 kg)	1460 lb (662 kg)
5020	50,000 ft-lb (6.9 tm)	20' 6" (6.2 m)	22' 5" (6.8 m)	8600 lb (3901 kg)	1480 lb (671 kg)
5525	55,000 ft-lb (7.6 tm)	24' 10" (7.5 m)	26' 2" (7.9 m)	10,500 lb (4763 kg)	2350 lb (1066 kg)
6025	60,000 ft-lb (8.3 tm)	24' 10" (7.5 m)	26' 2" (7.9 m)	10,500 lb (4763 kg)	2350 lb (1066 kg)
6625	66,000 ft-lb (9.1 tm)	24' 10" (7.5 m)	26' 2" (7.9 m)	10,500 lb (4763 kg)	2350 lb (1066 kg)
7025	70,000 ft-lb (9.7 tm)	24' 10" (7.5 m)	27' 0" (8.2 m)	14,000 lb (6350 kg)	3200 lb (1451 kg)
8025	80,000 ft-lb (11.1 tm)	24' 10" (7.5 m)	27' 0" (8.2 m)	14,000 lb (6350 kg)	3420 lb (1153 kg)

### ELECTRIC

Model	Rating	Horizontal Reach	Vertical Reach*	Max. Lift Capacity	Operating Weight
2003i	8000 ft-lb (1.0 tm)	78" (198 m)	8' 4" (2.6 m)	2000 lb (907 kg)	410 lb (186 kg)
3203i	12,000 ft-lb (1.6 tm)	15' 0" (4.6 m)	16' 1" (4.9 m)	4000 lb (1815 kg)	595/635 lb (270/288 kg)
4004i	18,000 ft-lb (2.5 tm)	16' 0" (4.9 m)	17' 2" (5.2 m)	4000 lb (1815 kg)	721/750 lb (327/340 kg)
5005i	30,000 ft-lb (4.1 tm)	22' 0" (6.7 m)	23' 6" (7.2 m)	5000 lb (2268 kg)	1440 lb (654 kg)
6006i	38,000 ft-lb (5.3 tm)	22' 0" (6.7 m)	23' 6" (7.2 m)	6000 lb (2722 kg)	1440 lb (654 kg)

\*From mounting surface.

## QuickSet Series

With hexagonal booms, adjustable wear pads, extension boom sequencing, and more, IMT QuickSet cranes offer outstanding performance and value.

Model	Rating	Horizontal Reach*	Vertical Reach**	Max. Lift Capacity	Rotation
20/141-K2/JK2	138,000 ft-lb (19.1 tm)	48' 6" (14.8 m)	56' 9" (17.3 m)	1830 lb (830 kg)	410° (7.16 rad)
25/180-K3/JK2	168,530 ft-lb (23.3 tm)	54' 9" (16.7 m)	63' 4" (19.3 m)	1875 lb (850 kg)	420° (7.33 rad)
28/198-K3/JK3	185,900 ft-lb (25.7 tm)	60' 4" (18.4 m)	68' 6" (20.9 m)	1875 lb (850 kg)	420° (7.33 rad)
34/235-K3/JK3	235,075 ft-lb (32.5 tm)	61' 0" (18.6 m)	69' 10" (21.3 m)	1985 lb (900 kg)	420° (7.33 rad)
37/266-K4/JK3	266,175 ft-lb (36.8 tm)	68' 3" (20.8 m)	76' 9" (23.4 m)	1985 lb (900 kg)	420° (7.33 rad)
37/266-K4/JK4	266,175 ft-lb (36.8 tm)	73' 9" (22.5 m)	82' 3" (25.0 m)	1435 lb (650 kg)	420° (7.33 rad)

\*With jib.

\*\*From mounting surface with jib.

Note: For maximum lift capacity, see appropriate crane model's complete specifications.



## Hydraulic Loaders

IMT hydraulic loaders are ideal for handling virtually any stacked or palletized material — even in tight places up to seven stories high.

Model	Rating	Horizontal Reach	Vertical Reach*	Max. Lift Capacity	Lifting Height	Operating Weight
16000 SIII	160,000 ft-lb (22.1 tm)	42' 0" (12.8 m)	54' 1" (16.5 m)	5825 lb (2642 kg)	54' 3" (16.5 m)**	10,500 lb (4762 kg)
24562	130,570 ft-lb (18.1 tm)	62' 4" (19.0 m)	71' 4" (21.8 m)	5000 lb (2270 kg)	75' 6" (23.0 m)***	12,060 lb (5470 kg)

\*From mounting surface.

\*\*Based on 40" (101 cm) mounting height.

\*\*\*Based on 50" (127 cm) mounting height.





## Articulating Cranes

IMT articulating cranes provide superior lift-to-weight ratios, outstanding quality, and proven reliability and performance.

Model	Rating	Horizontal Reach	Vertical Reach*	Max. Lift Capacity	Operating Weight
2.5/18	18,085 ft-lb (2.5 tm)	18' 4" (5.6 m)	23' 0" (7.3 m)	1740 lb (790 kg)	850 lb (386 kg)
3.2/23	23,145 ft-lb (3.2 tm)	14' 5" (4.4 m)	20' 2" (6.2 m)	2195 lb (995 kg)	920 lb (418 kg)
5/33	32,550 ft-lb (4.5 tm)	16' 1" (4.9 m)	23' 0" (7 m)	2975 lb (1350 kg)	1255 lb (569 kg)
6/39	39,060 ft-lb (5.4 tm)	17' 1" (5.2 m)	23' 4" (7.1 m)	3525 lb (1600 kg)	1630 lb (740 kg)
7/48	48,460 ft-lb (6.7 tm)	17' 1" (5.2 m)	23' 7" (7.2 m)	4300 lb (1950 kg)	1905 lb (865 kg)
8/55	54,970 ft-lb (7.6 tm)	17' 5" (5.3 m)	23' 7" (7.2 m)	6120 lb (2775 kg)	2050 lb (930 kg)
9/59RC	58,585 ft-lb (8.1 tm)	17' 5" (5.3 m)	23' 7" (7.2 m)	6120 lb (2775 kg)	2050 lb (930 kg)
10/65	65,095 ft-lb (9 tm)	18' 8" (5.7 m)	25' 3" (7.7 m)	7165 lb (3250 kg)	2315 lb (1050 kg)
10/68RC	67,265 ft-lb (9.3 tm)	18' 8" (5.7 m)	25' 3" (7.7 m)	7165 lb (3250 kg)	2315 lb (1050 kg)
11/76	75,945 ft-lb (10.5 tm)	20' 4" (6.2 m)	27' 11" (8.5 m)	7320 lb (3320 kg)	2910 lb (1320 kg)
12/78Z	77,395 ft-lb (10.7 tm)	22' 1" (6.7 m)	29' 10" (9.1 m)	6615 lb (3000 kg)	3375 lb (1530 kg)
13/88DL	87,520 ft-lb (12.1 tm)	20' 4" (6.2 m)	28' 7" (8.7 m)	10,780 lb (4890 kg)	3000 lb (1360 kg)
13/88SL	88,245 ft-lb (12.2 tm)	20' 4" (6.2 m)	28' 7" (8.7 m)	9920 lb (4500 kg)	2890 lb (1310 kg)
14/98DL	97,645 ft-lb (13.5 tm)	20' 4" (6.2 m)	28' 7" (8.7 m)	11,885 lb (5390 kg)	3000 lb (1360 kg)
14/98SL	97,645 ft-lb (13.5 tm)	20' 4" (6.2 m)	28' 7" (8.7 m)	11,025 lb (5000 kg)	2890 lb (1310 kg)
15/105SL	104,880 ft-lb (14.5 tm)	20' 4" (6.2 m)	28' 7" (8.7 m)	12,125 lb (550 kg)	3020 lb (1370 kg)
15/105DL	104,880 ft-lb (14.5 tm)	20' 4" (6.2 m)	28' 7" (8.7 m)	13,470 lb (6110 kg)	3130 lb (1420 kg)
17/117SL	116,450 ft-lb (16.1 tm)	20' 4" (6.2 m)	28' 6" (8.7 m)	12,785 lb (5800 kg)	3020 lb (1370 kg)
17/117DL	115,730 ft-lb (16 tm)	20' 4" (6.2 m)	28' 6" (8.7 m)	14,835 lb (6730 kg)	3130 lb (1420 kg)
18/124SL	119,345 ft-lb (16.5 tm)	27' 3" (8.3 m)	35' 1" (10.7 m)	13,800 lb (6260 kg)	3900 lb (1770 kg)
18/124DL	120,070 ft-lb (16.6 tm)	27' 3" (8.3 m)	35' 1" (10.7 m)	14,265 lb (6470 kg)	4055 lb (1840 kg)
20/138SL	133,085 ft-lb (18.4 tm)	27' 3" (8.3 m)	35' 1" (10.7 m)	15,345 lb (6060 kg)	3900 lb (1770 kg)
20/138DL	133,085 ft-lb (18.4 tm)	27' 3" (8.3 m)	35' 1" (10.7 m)	15,740 lb (7140 kg)	4055 lb (1840 kg)
22/153SL	148,275 ft-lb (20.5 tm)	27' 3" (8.3 m)	35' 1" (10.7 m)	17,065 lb (7740 kg)	4180 lb (1895 kg)
22/153DL	149,000 ft-lb (20.6 tm)	27' 3" (8.3 m)	35' 1" (10.7 m)	17,550 lb (7960 kg)	4365 lb (1980 kg)
24/169SL	169,910 ft-lb (22.8 tm)	27' 3" (8.3 m)	35' 1" (10.7 m)	18,940 lb (8590 kg)	4180 lb (1895 kg)
24/169DL	165,635 ft-lb (22.9 tm)	27' 3" (8.3 m)	35' 1" (10.7 m)	19,355 lb (8780 kg)	4365 lb (1980 kg)
25/180	176,485 ft-lb (24.4 tm)	27' 3" (8.3 m)	35' 5" (10.8 m)	20,945 lb (9500 kg)	5800 lb (2630 kg)
30/217	203,970 ft-lb (28.2 tm)	27' 3" (8.3 m)	35' 5" (10.8 m)	23,700 lb (10,750 kg)	5800 lb (2630 kg)
34/235	235,075 ft-lb (32.5 tm)	28' 3" (8.6 m)	36' 9" (11.2 m)	27,560 lb (12,500 kg)	7880 lb (3575 kg)
42/269	268,345 ft-lb (37.1 tm)	28' 3" (8.6 m)	36' 9" (11.2 m)	29,760 lb (13,500 kg)	7925 lb (3595 kg)
52/380	379,010 ft-lb (52.4 tm)	27' 3" (8.3 m)	36' 5" (11.1 m)	25,815 lb (11,710 kg)	9700 lb (4400 kg)
60/427	371,053 ft-lb (51.3 tm)	51' 0" (15.8 m)	61' 0" (18.6 m)	27,560 lb (12,500 kg)	12,015 lb (5450 kg)
72/516	516,435 ft-lb (71.4 tm)	27' 3" (8.3 m)	36' 5" (11.1 m)	35,405 lb (16,060 kg)	12,345 lb (5600 kg)
80/565	522,946 ft-lb (72.3 tm)	51' 10" (15.8 m)	61' 7" (18.8 m)	37,480 lb (17,000 kg)	14,990 lb (6800 kg)
3000	30,150 ft-lb (4.2 tm)	15' 0" (4.6 m)	20' 7" (6.3 m)	5000 lb (2266 kg)	1770 lb (803 kg)
5217	52,300 ft-lb (7.2 tm)	17' 5" (5.3 m)	24' 1" (7.3 m)	6900 lb (3130 kg)	2890 lb (1311 kg)
5200	52,560 ft-lb (7.2 tm)	32' 2" (9.8 m)	37' 10" (11.5 m)	8300 lb (3765 kg)	3060 lb (1388 kg)
7415	74,000 ft-lb (10.2 tm)	15' 1" (4.6 m)	21' 9" (6.6 m)	12,000 lb (5125 kg)	3620 lb (1642 kg)
9000	90,400 ft-lb (12.5 tm)	36' 7" (11.2 m)	42' 6" (13 m)	11,300 lb (5125 kg)	4375 lb (1984 kg)
12916	129,000 ft-lb (17.8 tm)	16' 2" (4.9 m)	23' 1" (7 m)	14,000 lb (6350 kg)	6040 lb (2740 kg)
32027	320,000 ft-lb (44.3 tm)	27' (8.4 m)	33' 5" (10.2 m)	21,240 lb (9634 kg)	16,500 lb (7484 kg)

\*From mounting surface.

