

CRANE WORKS



BODY LOAD IRON TRUCKS & CUSTOM IRON TRAILERS



SALES@CRANE-WORKS.COM

WWW.CRANE-WORKS.COM

CraneWorks, Inc. - Corp.
7795 East Little York Road
Houston, TX 77016
(281) 219-7779 Main
(713) 491-9359 Fax

CraneWorks - Colorado
10200 East 106th Avenue
Brighton, CO 80601
(303) 286-7555 Main
(303) 286-7595 Fax

CraneWorks - Canada
4829 209A Street
Edmonton, Alberta
T6M 3A3
(780) 906-5236 Main

CraneWorks - Mexico
Vhsa. Tabasco. Mexico 86280
(713) 893-8181 Main
52 331 659 2401 Nextel
92 · 14 · 26449 Radio



ABOUT OUR OILFIELD EQUIPMENT...

CRANEWORKS SPECIALIZES IN SUPPLYING HIGH-QUALITY EQUIPMENT FOR GLOBAL OIL & GAS COMPLETION SERVICES. WORKING CLOSELY WITH OUR CUSTOMERS, WE HAVE DESIGNED, ENGINEERED, AND BUILT OVER 100 CUSTOM BODY LOAD IRON TRUCKS AND CUSTOM IRON TRAILERS WHICH ARE CURRENTLY WORKING AROUND THE WORLD. DUE TO THE REMOTE LOCATIONS WHERE OUR UNITS OPERATE, IT IS OUR GOAL TO BUILD THE LEAST COMPLICATED, MOST RELIABLE PRODUCTS ON THE MARKET. OUR UNITS INCLUDE EITHER AN ARTICULATED OR TELESCOPIC BOOM CRANE TO OFF-LOAD ON LOCATION. OUR IRON TRAILERS INCLUDE A DIESEL DRIVEN SELF-CONTAINED POWER PACK SO THAT IT CAN BE USED INDEPENDENT OF THE TRUCK THAT PULLS IT. WE CAN PROVIDE RACKING CONFIGURATIONS FOR ANY CUSTOMER SUPPLIED IRON LIST.



BODY LOAD IRON TRUCK WITH TELESCOPIC BOOM CRANE

BUILT BUBBA-RESISTANT™
BY CRANEWORKS

BODY LOAD IRON & MANIFOLD TRUCKS



COMBINATION MANIFOLD IRON TRUCK



SKID-MOUNTED MANIFOLD TRUCK

WWW.CRANE-WORKS.COM

CRANE WORKS



POWER PACK IS ATTACHED TO IRON TRAILER VIA QUICK COUPLERS SO THAT IT CAN BE REMOVED AND SET ON THE GROUND FOR EASY ACCESS AND SERVICEABILITY

85HP JOHN DEERE WATER-COOLED ENGINE WITH KEY START OR START & THROTTLE VIA THE CRANE'S RADIO REMOTE CONTROL

BENT-AXIS 10 GPM PISTON PUMP

53 GALLON HYDRAULIC OIL RESERVOIR
50 GALLON DIESEL FUEL TANK

12V HIGH-CAPACITY BATTERY

MURPHY GAUGES

AIR KILL IS STANDARD

THERMAL WRAP ON EXHAUST
TURBO IS STANDARD

SWIVEL RACKING SYSTEM. EACH SWIVEL RACK CAN ACCOMMODATE UP TO 3 REMOVABLE SWIVEL BASKETS WHICH CONTAIN SIX STYLE 10 OR STYLE 50, 3" OR 4" SWIVELS

HEXAGONAL CROSS BAR CAN BE "UNLOCKED" AND REMOVED FOR EASY ACCESS TO LOWER TIERS



4-TIER SWING-AWAY PUP JOINT RACKS FOR 3" OR 4" PUP JOINTS. ADDITIONAL TIERS (UP TO 8) CAN BE INCLUDED

END CAPTURE PLATES FORE AND AFT ON THE UPPER DECK TO SAFELY CONTAIN THE PUPS AND PREVENT SLIDING

DIAMOND PLATE TOOL BOX FOR STORAGE OF RADIO REMOTE HANDSET (TRANSMITTER) AND OPERATOR'S MANUALS

HYDRAULIC STABILIZERS IN LIEU OF MANUAL LANDING GEAR

UNDERBODY 2" AND 3" PUP RACKS TO HOLD 2' THROUGH 15' PUP JOINTS

WWW.CRANE-

CUSTOM IRON TRAILERS

8 HIGH-INTENSITY PER-LUX® LIGHTS TO ILLUMINATE THE TRAILER WORK AREA AND 1 CRANE-MOUNTED LIGHT TO ILLUMINATE THE CRANE'S AREA OF OPERATION

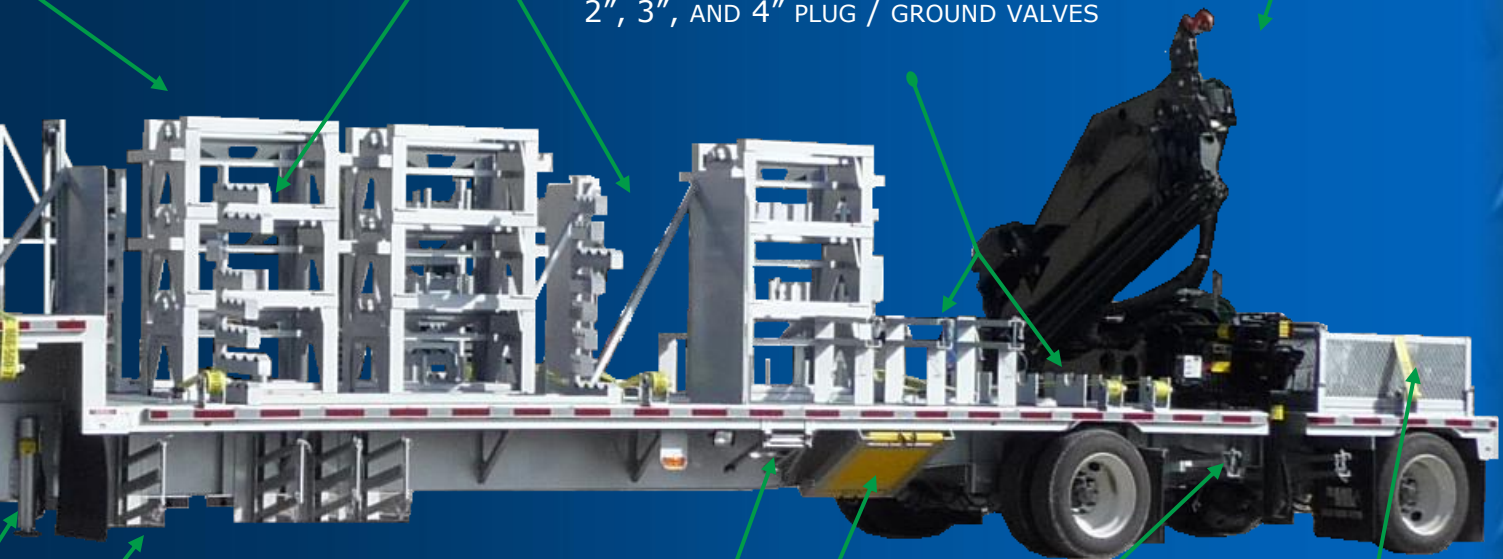
8-TIER SWING-AWAY PUP JOINT RACKS HOLD 3" OR 4" PUP JOINTS FROM 10' TO 20' LENGTHS. RACKS SWIVEL OUT OF THE WAY FOR EASY ACCESS TO THE NEXT LAYER OF PUP JOINTS. PUP JOINTS ARE SECURED WITH TWO 4" RATCHET STRAPS

PALFINGER PK32080D WITH MAX PICK OF 14,770 LBS @ 14'1". WILL PICK 3,950 LBS @ 45'11". 2-½ T WINCH W/ ANTI 2-BLOCK & 2-PARTS OF LINE. RADIO REMOTE CONTROL

CRANEWORKS ELECTRICAL DISTRIBUTION BOX FOR LIGHTS, STROBES (OPTION) & CRANE POWER. PURPOSE-BUILT WIRING HARNESS WITH WEATHER PACK CONNECTORS. LED LIGHTS ARE STANDARD TO MEET FMVSS 108 REQUIREMENTS

FAST-LOAD SWIVEL RACKS FOR 3", STYLE 10 & STYLE 50 SWIVELS. THREE RACKS PER SIDE, EACH HOLDING THREE SWIVELS. THESE RACKS ALSO ACCOMMODATE LONG RADIUS SWIVELS

DECK RACKS TO ACCOMMODATE UP TO TWENTY 2", 3", AND 4" PLUG / GROUND VALVES



FOLD-OUT LADDER ON BOTH SIDES FOR EASY AND SAFE ACCESS TO THE DECK

UNDERBODY MAT RACKS ON BOTH SIDES OF TRAILER TO HOLD TWO 18" - 30" CRANEWORKS MATS

UNDERBODY STORAGE FOR UP TO TWENTY 2" STYLE 10 OR STYLE 50 SWIVELS

TWO 40" x 60" BASKETS RATED FOR 1,500 LBS. EACH. SUSPENDED USING FOUR-LEG BRIDAL SLINGS. POSTS WELDED TO INTERIOR TO SECURE LATERALS, CROSSOVERS, AND MISCELLANEOUS FITTINGS. RUBBERIZED FLOORING TO PROTECT THREADS

CRANE WORKS



TEREX BT2047

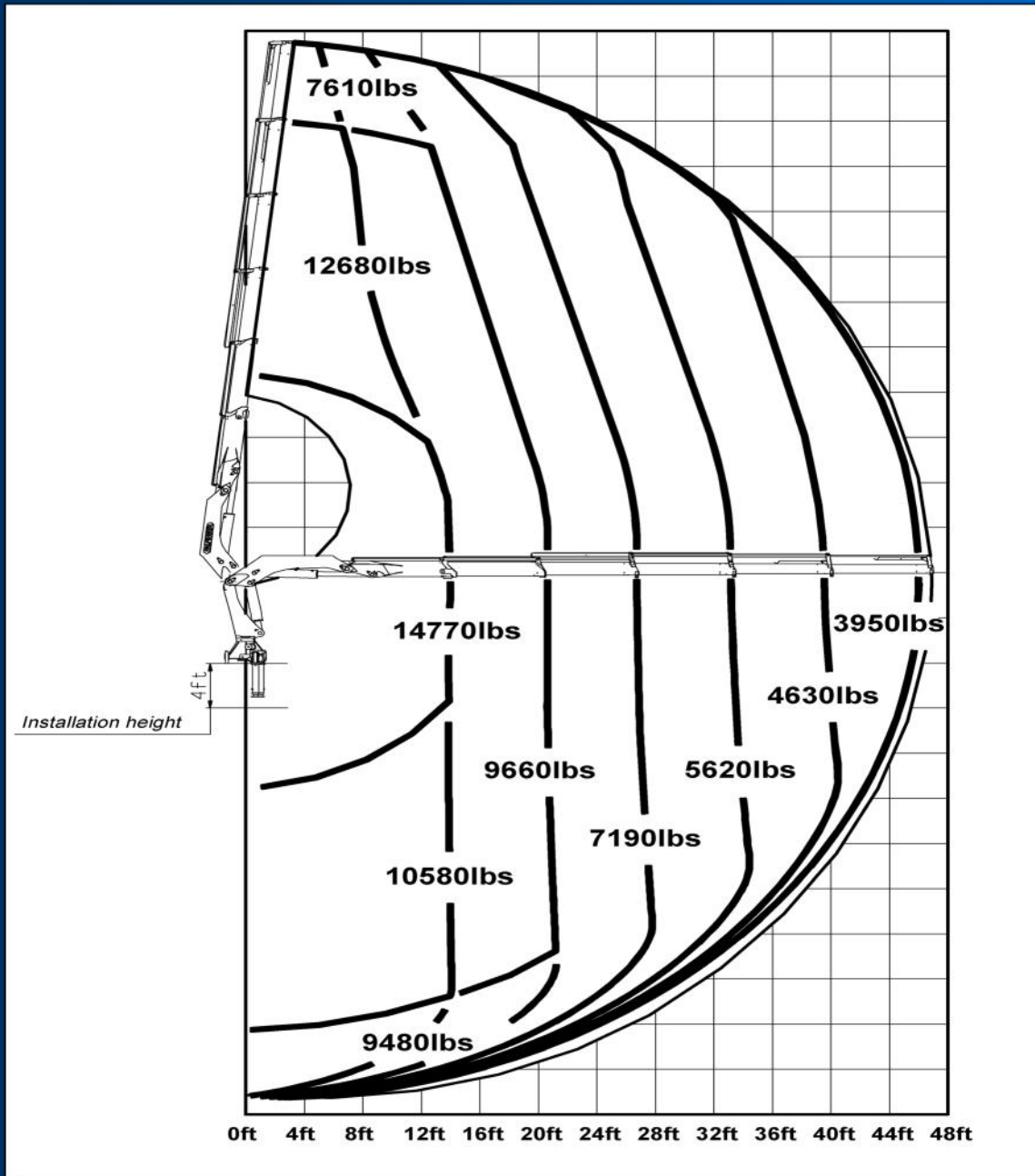
LOAD RATINGS IN LBS. WITH OUTRIGGERS EXTENDED											AREA OF OPERATION			
OPERATING HEIGHT	LOADED BOOM ANGLE	BOOM LENGTH												
		20 FT	27 FT	33 FT	40 FT	47 FT	20 FT	27 FT	33 FT	40 FT			47 FT	
5	73	20000*	78	12520*										
8	64	12830*	71	12230*	75	11850*	78	11170*						
10	57	10830*	66	10270*	72	9900*	75	9370*	78	8220*				
12	49	9350*	62	8860*	68	8520*	72	8130*	76	7430*				
14	41	8150*	57	7800*	64	7480*	70	7370*	73	6730*				
16	32	7240*	52	7100*	60	6810*	67	6540*	71	6090*				
18	16	5850*	47	6360*	56	6120*	63	5870*	68	5450*				
20			40	5660*	52	5550*	60	5320*	65	4930*				
25			15	3900*	39	4300*	51	4260*	58	4060*				
28					29	3700*	45	3690*	54	3510*				
31					13	2890*	38	3210*	49	3140*				
35							27	2690*	42	2670*				
38							12	2110*	36	2370*				
40									31	2250*				
45									14	1800*				
46									6	1465*				

JIB CAPACITIES FOR ALL BOOM LENGTHS										
CAPACITY ALERT SYSTEM IS NOT FUNCTIONAL WHEN LIFTING WITH JIB										
LOADED BOOM ANGLE	35°	40°	45°	50°	55°	60°	65°	70°	75°	78°
RETRACTED 18 FT JIB	800	900	1040	1200	1430	1760	2180	2800	3700	4400
EXTENDED 30 FT JIB	SEE NOTE 5	500	550	600	700	810	1000	1260	1660	2060

THIS INFORMATION IS FOR REFERENCE USE ONLY.
 THE MANUFACTURERS OPERATOR'S MANUAL SHOULD
 BE CONSULTED AND ADHERED TO.

CRANE LOAD CHARTS

PALFINGER PK32080-D



CRANE WORKS



SALES - SERVICE - PARTS - RENTALS



BOOM TRUCKS



TRUCK CRANES



ALL TERRAIN CRANES



SERVICE TRUCKS



ROUGH TERRAIN CRANES



CRAWLER CRANES



SIGN CRANES



CUSTOM OILFIELD EQUIPMENT



TEREX

Manitex



TADANO

PALFINGER

IMT

GORMAGH



SANY

CRANE WORKS MATS

SALES@CRANE-WORKS.COM

WWW.CRANE-WORKS.COM

CraneWorks, Inc. - Corp.
7795 East Little York Road
Houston, TX 77016
(281) 219-7779 Main
(713) 491-9359 Fax

CraneWorks - Colorado
10200 East 106th Avenue
Brighton, CO 80601
(303) 286-7555 Main
(303) 286-7595 Fax

CraneWorks - Canada
4829 209A Street
Edmonton, Alberta
T6M 3A3
(780) 906-5236 Main

CraneWorks - Mexico
Vhsa. Tabasco. Mexico 86280
(713) 893-8181 Main
52 331 659 2401 Nextel
92 · 14 · 26449 Radio